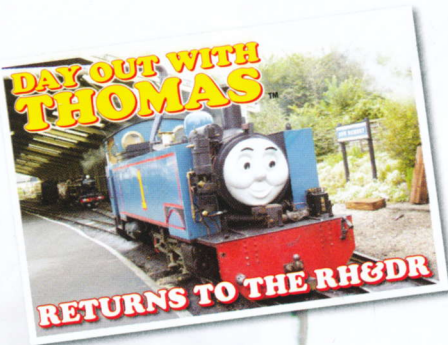


RH&DR

ROMNEY, HYTHE & DYMCHURCH RAILWAY

1927 • 85 YEARS • 2012



All fares at 2011 prices!



MEGA BLOKS



Electric Boat Trips



Hythe Royal Military Canal
2012

Bookings and enquiries: 07885 318301 www.electricboathythe.co.uk



By Road: Our stations at New Romney, Dymchurch and Hythe are all on or near the A259 which gives direct access from the Kent and Sussex coast. Hythe Station is only 3 miles from the M20 junction 11 and New Romney station is 30 minutes from M20 junction 10 at Ashford, via the A2070 and A259, which makes the RH&DR easily accessible from London, the M25, the Channel Ports and the Eurotunnel terminal at Folkestone. Follow the brown information signs on most routes. There are car parks at all major stations. Please note that we have provided Postcodes of our stations for use in navigation systems.

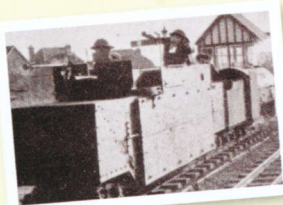
By Bus: Buses serve the Railway from Ashford, Canterbury, Hastings, Rye, Folkestone and Dover. A Combined Bus and RH&DR Ticket is available on most Stagecoach Bus Services in Kent and East Sussex. Telephone 0845 6002299 for details.

By Rail: Travel via Ashford International to Folkestone Central including the High Speed services to Folkestone from London St Pancras in just under one hour, then by bus to Hythe. Alternatively travel via Hastings to Rye and then by bus to New Romney. National Rail enquiries are on 0845 7484950.

By Coach: National Express service 021 operates daily between London and Hythe. Please telephone 0871 7818181 for information.

1940s Guided Tours on Mondays in July and August (except 27th August)

Learn about the contribution the railway made in WW2, see the 1940s exhibition. Lunch and tea included. Travel in first class Heritage coaches. Special fares apply: Call **01797 362353** or www.rhdr.org.uk. Pre-booking essential.



2012 Timetable and Guide

www.rhdr.org.uk

Opened in July 1927, **The Romney, Hythe and Dymchurch Railway** is 13½ miles of mainline in miniature. Once known as 'The World's Smallest Public Railway', its founder Captain Howey, and its designer and builder Henry Greenly, have given us something that remains the most enjoyable way to see the Romney Marsh and to visit the seaside towns and villages served by our stations on the route.

A traditional and delightful seaside village with a well deserved reputation as 'The Children's Paradise', **Dymchurch** has superb beaches, MW's funfair, gift shops, cafés, Martello Towers and is home for the fictional smuggling vicar, Dr Syn. 5 miles from Hythe. Postcode: **TN29 0PJ**



Romney Warren Halt serves the Kent Wildlife Trust's Romney Marsh Visitor Centre. A shuttle service operates from New Romney station on selected dates that are advertised on our website www.rhdr.org.uk. Other trains will stop specially for pre-booked parties. 7½ miles from Hythe. Postcode: **TN28 8AY**



Romney Warren Halt

St Mary's Bay

Our small, wayside station at **St Mary's Bay** is just under a 10 minutes walk from the sandy beach. 6 miles from Hythe. Postcode: **TN29 0SG**
Limited train service, please check timetable.

NEW ROMNEY

New Romney The headquarters of the railway, where you will find a well stocked gift shop, children's playground, our famous Model Railway Exhibition, the Heywood Buffet and the New Romney Visitor Centre. 8½ miles from Hythe. Postcode: **TN28 8PL**



A limited amount of blue badge parking is available at Hythe and New Romney Stations. All stations are accessible via ramps and a stair lift provides access to the Model Railway Exhibition. Wheelchair accessible toilets are situated at Hythe, Dymchurch, New Romney and Dungeness. Special carriages designed for conveying passengers travelling in wheelchairs are available on nearly all our trains. Call **01797 362353** for details.

ROMNEY SANDS

Romney Sands for Romney Sands Holiday Village including the Romney Tavern. The sandy beach is a short walk from the station. 10½ miles from Hythe. Postcode: **TN28 8RN**

Dungeness, which is on a large shingle headland, is renowned for its plants and wildlife. A short walk from our station takes you to the fishing beach and the old lighthouse. The Light Railway Café offers an eat-in or take-away service, including its famous Fish and Chips. 13½ miles from Hythe. Postcode: **TN29 9NA**



DUNGENESS

The terminus station at **Hythe** has a well stocked gift shop with many souvenir items, a variety of railway publications, toys, models, confectionery and ice creams. A short (10 minutes) walk takes you to the historic High Street, one of the longest and with many independent shops. Postcode: **CT21 6LD**



HYTHE

Hythe Electric Boat

On many dates between Easter and September a silent, electric boat will operate between Hythe Station/Hythe Boat station and Waitrose supermarket along the Royal Military Canal. Separate fares apply. Details available on our website or from the Operator: **07885 318301**

DYMCHURCH



Model Railway Exhibition

Visit the Exhibition at **New Romney Station**, which features a superb model railway with over 20 trains running, a visitor operated layout, historic models, toy collections, dolls, posters and photographs.

Open from 10.00am until the last train leaves for Hythe. There is a charge for admission, but passengers holding a "RomneyRover" or a "FamilyRover" ticket are admitted free. (This offer does not apply to school and youth groups or privilege rate fares).



Please ensure all passengers remain seated or restrained while train is moving. If your train stops at any time other than in a station, please remain seated unless otherwise instructed by the driver or guard. Passengers travelling with dogs please travel in an enclosed carriage with the doors shut for your dog's safety.

Diary of Events



Saturday 31st December 2011, Sunday 1st and Monday 2nd January 2012

New Year's Running. Kids for a Quid: Let your children experience something different in the new year for as little as £11 For more information visit www.rhdr.org.uk

Saturday 17th and Sunday 18th March Kent Big Weekend Out: An enhanced timetable between Hythe and New Romney with free tickets to be won. For more information visit bigweekend.mykent.co.uk

Sunday 18th March Mothers Day Special: Treat your mother to a day trip of nostalgia on a steam hauled train... why not go that extra mile and splash out on afternoon tea, some fizz or even let her drive an engine.

Sunday 8th April Easter Egg Hunt: A family fun Easter egg hunt.

Saturday 21st April Bug Club Day: Join Basil the Bug at New Romney Station for a day of family fun!

Saturday 19th May RH&DR AGM: Company AGM with additional services.

Saturday 26th and Sunday 27th May Steam and Diesel Gala Weekend: This is one not to miss with an enhanced timetable, all working locos in action, stalls and much more!

Saturday 2nd, Sunday 3rd, Monday 4th and Tuesday 5th June Queen's Diamond Jubilee: To celebrate 60 years of the Queen's reign we will be running the Heritage Set and Royal Carriage on a public service for all to enjoy.

Sunday 17th June Fathers Day Special: Let Dad fulfill that childhood dream and drive a real steam loco! Additional events and exhibitions including model railway and boat exhibitions and a selection of local ales for all to enjoy.

Friday 29th, Saturday 30th June and Sunday 1st July Day Out With Thomas: Special fares apply. Pre-booking advisable. Family fun for all. ©2012 Gullane (Thomas) Limited.

Monday 2nd July Hythe Festival, Morning Safari: Experience a wildlife excursion like no other and visit the unique features of the marsh, with a whistle stop tour of the Romney Marsh Visitor Centre. Enjoy a big breakfast to finish off the morning.

Thursday 5th July Hythe Festival, Backstage with the General Manager: An evening tour with Danny Martin. Learn the history behind the smallest commercial railway in the world. Take a peek at the fleet of steam and diesel locos while enjoying a tour of the workshops station sheds and museum. Pre-booking essential, limited availability.

Saturday 7th July Hythe Festival, Evening Diner Train: Enjoy an evening trip pulled by a steam loco from Hythe to Dungeness, then feast on a 'slap up' meal of Fish and Chips with either a glass of wine or a bottle of locally brewed beer.

Sunday 15th July RH&DR 85th Anniversary: Join us in celebrating 85 years of the railway as we promote our new cycling incentive in the build-up to the 2012 Olympics.

Wednesday 18th July Olympic Torch Relay Comes To Hythe: Additional services to Hythe on this once in a lifetime event.

Sunday 5th August Dungeness Lifeboat Open Day: Trains will be stopping near the Lifeboat Station.

Saturday 25th to Monday 27th August Dymchurch Day of Syn Festival: An enhanced timetable throughout this local historic festival.

Sunday 9th September Bus Rally Day: Enjoy a historic display of buses and coaches at New Romney Station, with a variety of special services operating throughout the day.

Saturday 29th and Sunday 30th September Vintage on the Railway: Take a step back in time and experience different eras along the entire railway. 1940s, 1960s, 1980s nostalgia like no other. Vintage markets, re-enactments, classic car shows and much more.

Monday 30th and Tuesday 31st October Halloween: A child friendly ghost train and tea party.

Friday 2nd November Fright Night Train: Late night ghost train to Dungeness. Enjoy mulled cider and local ghost stories. Over 18s only, not for the faint hearted!

Sunday 4th November End of Season Winter Parade: Enjoy an enhanced timetable with double headed trains running the full length of the line.

Saturday 1st, Sunday 2nd, Saturday 8th, Sunday 9th, Saturday 15th, Sunday 16th, Thursday 20th to Monday 24th December Santa Specials: Santa Specials, Christmas lunches and events.

Saturday 29th December to Tuesday 1st January 2013 New Year's Running.

Information

For details of all of our Special Events, Santa Specials, Dungeness Diner, Steam Driving Experience Days, Customised Corporate Events, Children's Birthday Parties, Local Residents Railcard, The Bug Club, RH&DR Association, Disabled Access, Group and Charter Travel telephone: 01797 362353, email: info@rhdr.org.uk or visit our website: www.rhdr.org.uk


Leaflets giving further information about all these activities are also available for delivery by post or to download from our website.

The Romney, Hythe & Dymchurch Railway

New Romney Station, New Romney, Kent TN28 8PL

The RH&DR reserves the right to alter any or all of the information contained in this leaflet without reference or notice. Design: RH&DR. Photography: Daniel Jenkins and Terry Burgess. © 2012 RH&DR.

 facebook RHDR

 <http://twitter.com/RHDR>

RH&DR Association

The railway is supported by the Romney Hythe and Dymchurch Railway Association through the provision of volunteer staff, working parties and the promotion of the railway throughout the country.

Membership benefits include reduced rate travel, a quality quarterly magazine and access to events and meetings. Details are available at all stations and on our website.

Fares

Special fares apply on Day Out With Thomas Events.

With seven different stations to choose from there are a tremendous number of return or single journeys on offer. Here are a few of the more popular Adult Return fares:

Hythe — Dymchurch £9.40

Hythe — New Romney £11.60

Hythe — Dungeness £15.00

New Romney — Dungeness £9.40

Children 3 years old — 15 years old travel at half fare.

Single Fares are approximately two-thirds the return rate.

A Senior Citizen Return Fare is available every day.

The Romney Marsh provides excellent opportunities for cycling and walking the dog. We welcome dog owners and their pets and are able to accommodate bicycles (subject to space availability) on our trains. We make a token charge of £1.00 per dog or bike for a day.

Different fares apply on Day Out With Thomas special events. See website or separate leaflet.

Combined Bus and Train Ticket

If you are coming by bus you can save money with the RH&DR/Stagecoach combined ticket.

The ticket, which costs £17.00 (adult), £8.50 (child) or £42.00 (family) is available from your Stagecoach driver. The ticket is valid for unlimited travel on Stagecoach buses in East Sussex and Kent, plus unlimited travel on the RH&DR (valid on day of issue only).

 **Stagecoach + RH&DR**

Romney Warren Halt

Romney Warren Halt serves the Kent Wildlife Trust's Romney Marsh Visitor Centre. A shuttle service operates from New Romney station on selected dates that are advertised on our website www.rhdr.org.uk. Other trains will stop specially for pre-booked parties.

RomneyRover

For great value buy a **RomneyRover** – the All Stations All Day unlimited ticket. FREE admission to the Model Railway Exhibition at New Romney is included. Adults £15.00 Children £7.50 Senior Citizens £13.00.

FamilyRover

The **FamilyRover** for 2 Adults and 2 Children offers the same benefits and costs just **£39.50**