

Electric Boat Trips


Hythe Royal Military
Canal
Spring 2011

Bookings and enquiries: 07885 318301



By Road: Our stations at New Romney, Dymchurch and Hythe are all on or near the A259 which gives direct access from the Kent and Sussex coast. Hythe Station is only 3 miles from the M20 junction 11 and New Romney station is 30 minutes from M20 junction 10 at Ashford, via the A2070 and A259, which makes the RH&DR easily accessible from London, the M25, the Channel Ports and the Eurotunnel terminal at Folkestone. Follow the brown information signs on most routes. There are car parks at all major stations. Please note that we have provided Postcodes of our stations for use in navigation systems.

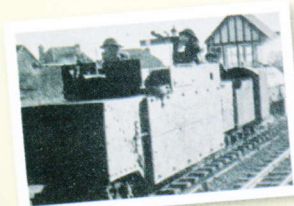
By Bus: Buses serve the Railway from Ashford, Canterbury, Hastings, Rye, Folkestone and Dover. A Combined Bus and RH&DR Ticket is available on most Stagecoach Bus Services in Kent and East Sussex. Telephone 0845 6002299 for details.

By Rail: Travel via Ashford International to Folkestone Central including the High Speed services to Folkestone from London St Pancras in just under one hour, then by bus to Hythe. Alternatively travel via Hastings to Rye and then by bus to New Romney. National Rail enquiries are on 0845 7484950.

By Coach: National Express service 021 operates daily between London and Hythe. Please telephone 0871 7818181 for information.

1940s Guided Tours on Mondays in July and August (except 29th August)

Learn about the contribution the railway made in WW2, see the 1940s exhibition. Lunch and tea included: Travel in first class Heritage coaches. Special fares apply: Call **01797 362353** or www.rhdr.org.uk. Pre-booking essential.



RH&DR

ROMNEY, HYTHE & DYMCHURCH RAILWAY

**NEW
for 2011**
Electric boat
link to Hythe
town centre



2011 Timetable and Guide

www.rhdr.org.uk



Opened in July 1927, **The Romney, Hythe and Dymchurch Railway** is 13½ miles of mainline in miniature. Once known as 'The World's Smallest Public Railway', its founder Captain Howey, and its designer and builder Henry Greenly, have given us something that remains the most enjoyable way to see the Romney Marsh and to visit the seaside towns and villages served by our stations on the route.

A traditional and delightful seaside village with a well deserved reputation as 'The Children's Paradise', **Dymchurch** has superb beaches, MW's funfair, gift shops, cafés, Martello Towers and is home for the fictional smuggling vicar, Dr Syn. 5 miles from Hythe. Postcode: **TN29 0PJ**



Romney Warren Halt serves the Kent Wildlife Trust's Romney Marsh Visitor Centre. A shuttle service operates from New Romney station on selected dates that are advertised on our website www.rhdr.org.uk. Other trains will stop specially for pre-booked parties. 7½ miles from Hythe. Postcode: **TN28 8AY**



NEW ROMNEY

New Romney The headquarters of the railway, where you will find a well stocked gift shop, children's playground, our famous Model Railway Exhibition, the Heywood Buffet and the New Romney Visitor Centre. 8½ miles from Hythe. Postcode: **TN28 8PL**



ROMNEY SANDS

Romney Sands for Romney Sands Holiday Village including the Romney Tavern. The sandy beach is a short walk from the station. 10½ miles from Hythe. Postcode: **TN28 8RN**

Dungeness, which is on a large shingle headland, is renowned for its plants and wildlife. A short walk from our station takes you to the fishing beach and the old lighthouse. The Light Railway Café offers an eat-in or take-away service, including its famous Fish and Chips. 13½ miles from Hythe. Postcode: **TN29 9NA**



The terminus station at **Hythe** has a well stocked gift shop with many souvenir items, a variety of railway publications, toys, models, confectionery and ice creams. A short (10 minutes) walk takes you to the historic High Street, one of the longest and with many independent shops. Postcode: **CT21 6LD**



HYTHE

New for 2011

On many dates between Easter and September a silent, electric boat will operate between Hythe Station/Hythe Boat station and Waitrose supermarket along the Royal Military Canal. Separate fares apply. Details available on our website or from the Operator: **07885 318301**

DYMCHURCH

St Mary's Bay

Our small, wayside station at **St Mary's Bay** is just under a 10 minutes walk from the sandy beach. 6 miles from Hythe. Postcode: **TN29 0SG**
Limited train service please check timetable.

Romney Warren Halt



A limited amount of blue badge parking is available at Hythe and New Romney Stations. All stations are accessible via ramps and a stair lift provides access to the Model Railway Exhibition. Wheelchair accessible toilets are situated at Hythe, Dymchurch, New Romney and Dungeness. Special carriages designed for conveying passengers travelling in wheelchairs are available on nearly all of our trains. Call **01797 362353** for details.

Model Railway Exhibition

Visit the Exhibition at **New Romney Station**, which features a superb model railway with over 20 trains running, a visitor operated layout, historic models, toy collections, dolls, posters and photographs.



Open from 10.00am until the last train leaves for Hythe. There is a charge for admission, but passengers holding a "RomneyRover" or a "FamilyRover" ticket are admitted free. (This offer does not apply to school and youth groups or privilege rate fares).



Please ensure all passengers remain seated or restrained while train is moving. If your train stops at any time other than in a station, please remain seated unless otherwise instructed by the driver or guard. Passengers travelling with dogs please travel in an enclosed carriage with the doors shut for your dog's safety.

Train Services

January

Mo	Tu	We	Th	Fr	Sa	Su
					1	2
3	4	5	6	7	8	9
10	11	12	13	14	15	16
17	18	19	20	21	22	23
24	25	26	27	28	29	30
31						

February

Mo	Tu	We	Th	Fr	Sa	Su
	1	2	3	4	5	6
7	8	9	10	11	12	13
14	15	16	17	18	19	20
21	22	23	24	25	26	27
28						

March

Mo	Tu	We	Th	Fr	Sa	Su
	1	2	3	4	5	6
7	8	9	10	11	12	13
14	15	16	17	18	19	20
21	22	23	24	25	26	27
28	29	30	31			

April

Mo	Tu	We	Th	Fr	Sa	Su
				1	2	3
4	5	6	7	8	9	10
11	12	13	14	15	16	17
18	19	20	21	22	23	24
25	26	27	28	29	30	

May

Mo	Tu	We	Th	Fr	Sa	Su
						1
2	3	4	5	6	7	8
9	10	11	12	13	14	15
16	17	18	19	20	21	22
23	24	25	26	27	28	29
30	31					

June

Mo	Tu	We	Th	Fr	Sa	Su
			1	2	3	4
5	6	7	8	9	10	11
12	13	14	15	16	17	18
19	20	21	22	23	24	25
26	27	28	29	30		

July

Mo	Tu	We	Th	Fr	Sa	Su
				1	2	3
4	5	6	7	8	9	10
11	12	13	14	15	16	17
18	19	20	21	22	23	24
25	26	27	28	29	30	31

August

Mo	Tu	We	Th	Fr	Sa	Su
1	2	3	4	5	6	7
8	9	10	11	12	13	14
15	16	17	18	19	20	21
22	23	24	25	26	27	28
29	30	31				

September

Mo	Tu	We	Th	Fr	Sa	Su
			1	2	3	4
5	6	7	8	9	10	11
12	13	14	15	16	17	18
19	20	21	22	23	24	25
26	27	28	29	30		

October

Mo	Tu	We	Th	Fr	Sa	Su
				1	2	
3	4	5	6	7	8	9
10	11	12	13	14	15	16
17	18	19	20	21	22	23
24	25	26	27	28	29	30
31						

November

Mo	Tu	We	Th	Fr	Sa	Su
1	2	3	4	5	6	
7	8	9	10	11	12	13
14	15	16	17	18	19	20
21	22	23	24	25	26	27
28	29	30				

December

Mo	Tu	We	Th	Fr	Sa	Su
			1	2	3	4
5	6	7	8	9	10	11
12	13	14	15	16	17	18
19	20	21	22	23	24	25
26	27	28	29	30	31	


January 2012


Mo	Tu	We	Th	Fr	Sa	Su
					1	
2	3	4	5	6	7	8
9	10	11	12	13	14	15
16	17	18	19	20	21	22
23	24	25	26	27	28	29
30	31					


February 2012

Mo	Tu	We	Th	Fr	Sa	Su
	1	2	3	4	5	
6	7	8	9	10	11	12
13	14	15	16	17	18	19
20	21	22	23	24	25	26
27	28	29				

To use the Timetable, check the colour in the calendars against the colour coded timetables.

 Santa Specials. During December we operate our popular Santa Special services. Details and Booking forms will be available from June 2011 at our stations or by calling the Santa Hotline on 01797 362353.

 Although no train service will be operating on these dates, the Station, Heywood Buffet and Model Railway Exhibition at New Romney and the cafe at Dungeness will be open.

 One daily diesel-hauled return trip from New Romney operates to Hythe on school days only. Please call 01797 362353 to check times and that this service is operating as scheduled.

 Special Event with special or enhanced timetable or Pink or Green service timetable. A full list of our many events can be found in the Diary of Events. If special or enhanced timetables are operating for these events they are published in advance and available from stations and from our website.



				9.50	10.30	11.10	11.50	12.30	1.10	1.50	2.30	3.10	3.50	4.30	5.10	5.40	6.20
HYTHE																	
Dymchurch				10.10	10.50	11.30	12.10	12.50	1.30	2.10	2.50	3.30	4.10	4.50	5.30	6.00	
St Mary's Bay				10.16				12.56			R2.56			4.56			
NEW ROMNEY arr				10.25	11.05	11.45	12.25	1.05	1.45	2.25	3.07	3.45	4.25	5.05	5.45	6.15	6.50
NEW ROMNEY dep				9.48	10.28	11.08	11.48	12.28	1.08	1.48	2.28	3.10	3.48	4.28	5.08		
Romney Sands				9.58	10.38	11.18	11.58	12.38	1.18	1.58	2.38	3.20	3.58	4.38	5.18		
DUNGENESS				10.15	10.55	11.35	12.15	12.55	1.35	2.15	2.55	3.37	4.15	4.55	5.35		
DUNGENESS				10.22	11.02	11.42	12.22	1.02	1.42	2.22	3.02	3.42	4.22	5.02	5.42		
Romney Sands				10.38	11.18	11.58	12.38	1.18	1.58	2.38	3.20	3.58	4.38	5.18	5.58		
NEW ROMNEY arr				10.48	11.28	12.08	12.48	1.28	2.08	2.48	3.30	4.08	4.48	5.28	6.08		
NEW ROMNEY dep	9.35	10.15	10.55	11.35	12.15	12.55	1.35	2.15	2.55	3.35	4.15	4.55	5.35				
St Mary's Bay	R9.44		R11.04	11.43		R1.04	R1.44			3.43		R5.04	R5.44				
Dymchurch	9.52	10.30	11.12	11.50	12.30	1.12	1.52	2.30	3.10	3.50	4.30	5.12	5.52				
HYTHE	10.12	10.50	11.32	12.10	12.50	1.32	2.12	2.50	3.30	4.10	4.50	5.32	6.12				

R Train stops on request by giving clear signal to the driver to board and by advising the Guard/Station staff before joining train if you wish to alight there.

HYTHE				10.30	11.30	12.30	1.30	2.30	3.30	4.30	5.20	5.55
Dymchurch				10.50	11.50	12.50	1.50	2.50	3.50	4.50	5.40	
St Mary's Bay				R10.55		12.55	R1.55	R2.55		4.55		
NEW ROMNEY arr				11.07	12.05	1.05	2.07	3.07	4.05	5.07	5.55	6.25
NEW ROMNEY dep				10.25	11.10	12.08	1.08	2.10	3.10	4.08	*5.08	
Romney Sands				10.35	11.20	12.18	1.18	2.20	3.20	4.18	*5.18	
DUNGENESS				10.52	11.37	12.35	1.35	2.37	3.37	4.35	*5.35	
DUNGENESS				11.00	12.00	1.00	2.00	3.00	4.00	4.40	*5.40	
Romney Sands				11.20	12.18	1.18	2.20	3.20	4.18	4.58	*5.55	
NEW ROMNEY arr				11.30	12.28	1.28	2.28	3.30	4.28	5.08	*6.05	
NEW ROMNEY dep	9.35	10.35	11.35	12.35	1.35	2.35	3.35	4.35	5.12			
St Mary's Bay	R9.44	R10.44	11.43		R1.44		3.43		R5.20			
Dymchurch	9.52	10.52	11.50	12.50	1.52	2.50	3.50	4.50	5.25			
HYTHE	10.12	11.12	12.10	1.10	2.12	3.10	4.10	5.10	5.45			

* Does not run in February, March, October 2011 and February 2012.

R Train stops on request by giving clear signal to the driver to board and by advising the Guard/Station staff before joining train if you wish to alight there.

HYTHE				10.30	12.30	2.30	4.00
Dymchurch				10.50	12.50	2.50	4.20
St Mary's Bay				R10.55	R12.55	R2.55	R4.25
NEW ROMNEY arr				11.07	1.07	3.07	4.35
NEW ROMNEY dep				10.00	11.35	1.35	3.15
Romney Sands				10.10	11.45	1.45	3.25
DUNGENESS				10.30	12.05	2.05	3.45
DUNGENESS				11.00	1.00	2.30	4.00
Romney Sands				11.18	1.18	2.48	4.18
NEW ROMNEY arr				11.28	1.28	2.58	4.28
NEW ROMNEY dep	9.35	11.35	1.35	3.15			
St Mary's Bay	R9.44	R11.44	R1.44	R3.23			
Dymchurch	9.51	11.51	1.51	3.30			
HYTHE	10.12	12.12	2.12	3.50			

R Train stops on request by giving clear signal to the driver to board



Saturday 3rd, Sunday 4th, Saturday 10th, Sunday 11th, Saturday 17th, Sunday 18th, Tuesday 20th to Saturday 24th December – Santa Specials.
Saturday 31st December 2011, Sunday 1st and Monday 2nd January 2012
 – New Year's Running.

Information

For details of all of our Special Events, Santa Specials, Dungeness Diner, Steam Driving Experience Days, Customised Corporate Events, Children's Birthday Parties, Local Residents Railcard, The Bug Club, RH&DR Association, Disabled Access, Group and Charter Travel:

telephone: 01797 362353 • email: info@rhdr.org.uk • web: www.rhdr.org.uk

The Romney, Hythe & Dymchurch Railway

New Romney Station, New Romney, Kent TN28 8PL

The RH&DR reserves the right to alter any or all of the information contained in this leaflet without reference or notice. Design: RH&DR. Photography: Mark Hewitt and Terry Burgess. ©2011 RH&DR.

RH&DR Association

The railway is supported by the Romney Hythe and Dymchurch Railway Association through the provision of volunteer staff, working parties and the promotion of the railway throughout the country.

Membership benefits include reduced rate travel, a quality quarterly magazine and access to events and meetings. Details are available at all stations and on our website.

Fares

With seven different stations to choose from there are a tremendous number of return or single journeys on offer. Here are a few of the more popular Adult Return fares:

Hythe — Dymchurch £9.40

Hythe — New Romney £11.60

Hythe — Dungeness £15.00

New Romney — Dungeness £9.40

Children 3 years old — 15 years old
 travel at half fare.

Single Fares are approximately
 two-thirds the return rate.

A Senior Citizen Return Fare is available
 every day.

The Romney Marsh provides excellent
 opportunities for cycling and walking the
 dog. We welcome dog owners and their pets and are able to accommodate bicycles
 (subject to space availability) on our trains. We make a token charge of £1.00 per dog or
 bike for a day.

Combined Bus and Train Ticket

If you are coming by bus you can save money with the RH&DR/Stagecoach
 combined ticket.

The ticket, which costs £17.00 (adult), £8.50 (child) or £42.00 (family) is available from your
 Stagecoach driver. The ticket is valid for unlimited travel on Stagecoach buses in East
 Sussex and Kent, plus unlimited travel on the RH&DR (valid on day of issue only).

 **Stagecoach + RH&DR**

Romney Warren Halt

Romney Warren Halt serves the Kent Wildlife Trust's Romney Marsh Visitor Centre. A
 shuttle service operates from New Romney station on selected dates that are advertised
 on our website www.rhdr.org.uk. Other trains will stop specially for pre-booked parties.

Diary of Events

Saturday 1st, Sunday 2nd and Monday 3rd January 2011

– New Year's Running.

Saturday 26th and Sunday 27th March – Kent Big Weekend Out. Enhanced timetable
 between Hythe and New Romney. Free tickets to be won via Visit Kent website:
www.visitkent.co.uk. Exhibition of railway events including weddings, special groups, etc.

Sunday 3rd April – Mothers Day. Mothers can drive an engine. Afternoon teas.

Sunday 24th April – Easter Egg Hunt competition.

Saturday 14th and Sunday 15th May – 1940s Weekend. School visits available 9th –
 13th May. 1940s related events at all main stations; Single airplane flypast; Replica
 Armoured Train; 1940s exhibition; Special themed menu; Evening entertainment.

Saturday 21st May – RH&DR Association AGM. Presentation of Heritage Museum
 proposal. RH&DR Railwayanna Auction.

Saturday 11th June – Company AGM and Doctor Syn's 80th Birthday Party. Evening
 Dungeness Diner.

Saturday 18th and Sunday 19th June – Family Fun weekend. Model Exhibitions;
 Basil the Bug our mascot engine pulling trains and joining in lots of Family Fun. Bug Club
 members free.

Saturday 25th June – Evening guided Heritage tour between New Romney and
 Dungeness. Pre-booking essential.

Saturday 2nd July – Evening BBQ Train.

Saturday 16th July – Evening guided Heritage tour between New Romney and Hythe.
 Pre-booking essential.

Sunday 14th August – Dungeness Lifeboat Open Day 10.00am – 4.00pm.

Sunday 11th September – Bus and Vehicle Rally.

Saturday 17th September – Evening Dungeness Diner.

Saturday 1st and Sunday 2nd October – Steam & Diesel Gala. All available locos in
 traffic. Non-stop and unusual workings. Special timetable.

Friday 28th and Saturday 29th October – Halloween Event. Special Train; High Tea
 and Halloween Fun.

