



STEAMER EXCURSIONS ON THE THAMES

These Steamers afford opportunities of making excursions on the Thames on any day during the summer without the trouble of arranging in advance.

The Steamers have all been built specially for this service, and are as large as can be conveniently navigated on the Upper Thames (each being licensed to carry about 200 passengers). They have large saloons and the fore-deck is covered with a waterproof awning.

Salters' Steamers run daily, seven days a week, in each direction between Kingston and Oxford, and provide a service twice daily for the greater part of the ninety-one miles of the river between the terminal points, thus giving facilities for innumerable day and half-day excursions on the river. Those who desire to make the whole Thames tour, whether upstream or downstream, may do it in two and a half days any day after July 13th. The time-table in this leaflet gives the times of all the Steamers at every lock and stopping-place, and passengers may join or leave the Steamers at any of these points.

The Steamers stop each day about one hour for luncheon. Light refreshments and afternoon teas are provided on board, and all Steamers are fully licensed.

COMBINED RAIL AND STEAMER EXCURSIONS

Special arrangements have been made with British Railways for facilities for those who live at a distance from the river. Combined rail and Steamer tickets can be obtained from many of the principal railway stations in England and Wales. Tickets and full details are available at stations and from the usual agencies.

COMBINED ROAD AND STEAMER EXCURSIONS

Complete information regarding combined Road and Steamer tickets may be obtained from the following:—

The City of Oxford Motor Service Ltd., 138, High Street, Oxford.

Tel.: Oxford 2263.

The Thames Valley Traction Co. Ltd., 83, Lower Thorn Street, Reading.

Tel.: Reading 54046/7.

Full particulars of all Rail and Steamer or Road and Steamer tickets may also be obtained from:—

SALTER BROS. LTD.—

Folly Bridge, Oxford. Tel.: Oxford 2899 and 3421.

Caversham Bridge, Reading. Tel.: Reading 238811.

1, Thames Side, Windsor. Tel.: Windsor 832.

Kingston Pier, 52, High Street, Kingston. Tel.: Kingston 4843

SPECIAL PARTY OUTINGS

Salter Bros. Ltd. are the travel organisers of the River Thames. They have a fleet of Steamers available for parties of all sizes for trips on any part of the River Thames and can make all necessary arrangements including transit to and from the River, Steamer Trip and Catering. Illustrated leaflet on request.

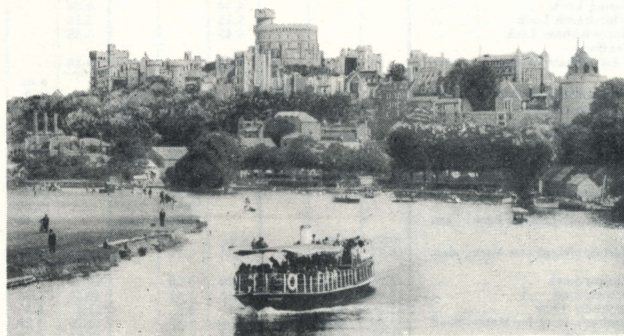
Send also for brochure on conducted School Educational Trips—London, Hampton Court, London Airport, Windsor, Oxford, Blenheim Palace, and many others.

Tickets are issued subject to the Conditions and Regulations laid down in the Official Time Tables and Handbooks of the Companies concerned.

SALTERS' RIVER THAMES STEAMERS

TIME-TABLE 1956 SEASON

*Sailings daily (Sunday included)
from May 19th to September 23rd inclusive*



For further particulars see Official Handbook and Time-table
Price 6d., by post 9d.

SALTER BROS. Ltd., Folly Bridge, OXFORD

Telephones : OXFORD 3421 and 2899

Also at

READING
(Telephone 238811)

WINDSOR
(Telephone 832)

STEAMER TIME-TABLE—DAILY SERVICE

May 19th to September 23rd, 1956, inclusive

DOWN STREAM—OXFORD TO KINGSTON

	MAY 19th to JULY 13th					JULY 14th to SEPT. 23rd incl.		
	Mondays to Fridays		Saturdays, Sundays, and Whit Monday			Daily (including Sundays)		
	a.m.	p.m.	a.m.	p.m.	p.m.	a.m.	p.m.	p.m.
Oxford Folly Bridge .. dep.	9.30	2.30	9.30	2.30	6.45	9.30	2.30	6.45
Iffley Lock	9.45	2.45	9.45	2.45	7.0	9.45	2.45	7.0
Sandford Lock	10.0	3.0	10.0	3.0	7.15	10.0	3.0	7.15
Abingdon Bridge .. .	11.0	4.15	11.0	4.15	8.30	11.0	4.15	8.30
Culham Lock			11.30			11.30		
Clifton Lock			p.m.			p.m.		
Day's Lock			12.5			12.5		
Benson Landing Stage ..			12.35			12.35		
Benson Landing Stage ..			1.15			1.15		
Wallingford Bridge .. .			3.0			3.0		
Goring Lock			3.15			3.15		
Whitchurch Lock			4.30			4.30		
Mapledurham Lock .. .			5.15			5.15		
Reading—			5.45			5.45		
Caversham Bridge .. .			6.15			6.15		
Caversham Bridge .. .			p.m.			p.m.		
Caversham Lock			10.0		2.45	10.0		2.45
Sonning Lock			10.10		2.55	10.10		2.55
Shiplake Lock			3.35		4.5	10.45		3.35
Marsh Lock			4.5		4.5	11.15		4.5
Henley (Hobbs' St. Stage) ..			4.40		4.40	11.40		4.40
Hambleton Lock			5.0		5.0	11.55		5.0
Hurley Lock						12.20		5.15
Marlow (Higginson Park) ..						12.45		5.45
Marlow (Higginson Park) ..						1.30		6.45
Marlow (Higginson Park) ..	a.m.	p.m.	a.m.	p.m.		a.m.	p.m.	
Marlow (Higginson Park) ..	10.15	3.15	10.15	3.15		10.15	3.15	
Marlow Lock	10.20	3.20	10.20	3.20		10.20	3.20	
Bourne End	10.45	3.45	10.45	3.45		10.45	3.45	
Cookham Lock	11.5	4.5	11.5	4.5		11.5	4.5	
Boulter's Lock for Maidenhead	11.30	4.30	11.30	4.30		11.30	4.30	
Bray Lock	11.55	5.10	11.55	5.10		11.55	5.10	
Windsor Bridge	p.m.		p.m.			p.m.		
Windsor Bridge	1.0	6.15	1.0	6.15		1.0	6.15	
Windsor Bridge	a.m.	p.m.	a.m.	p.m.		a.m.	p.m.	
Old Windsor Lock	9.20	2.45	9.20	2.45		9.20	2.45	
Runnymede Pleasure Grounds	10.20	3.50	10.20	3.50		10.20	3.50	
Bell Weir Lock	10.30	4.0	10.30	4.0		10.30	4.0	
Staines (Town Hall Steps) ..	10.40	4.10	10.40	4.10		10.40	4.10	
Penton Hook Lock	11.5	4.35	11.5	4.35		11.5	4.35	
Chertsey Lock	11.25	4.55	11.25	4.55		11.25	4.55	
Shepperton Lock	11.50	5.20	11.50	5.20		11.50	5.20	
Walton (Anglers' Wharf) ..	p.m.		p.m.			p.m.		
Sunbury Lock	12.15	5.45	12.15	5.45		12.15	5.45	
Molesey Lock (Hampton Court)	12.30	6.0	12.30	6.0		12.30	6.0	
Kingston Pier	1.0	6.30	1.0	6.30		1.0	6.30	
	1.30	7.0	1.30	7.0		1.30	7.0	

UP STREAM—KINGSTON TO OXFORD

	MAY 19th to JULY 13th					JULY 14th to SEPT. 23rd incl.		
	Mondays to Fridays		Saturdays, Sundays, and Whit Monday			Daily (including Sundays)		
	a.m.	p.m.	a.m.	p.m.	p.m.	a.m.	p.m.	p.m.
Kingston Pier	9.0	2.30	9.0	2.30		9.0	2.30	
Molesey Lock (Hampton Court)	9.30	3.0	9.30	3.0		9.30	3.0	
Sunbury Lock	10.0	3.30	10.0	3.30		10.0	3.30	
Walton (Anglers' Wharf) ..	10.10	3.40	10.10	3.40		10.10	3.40	
Shepperton Lock	10.40	4.5	10.40	4.5		10.40	4.5	
Chertsey Lock	11.5	4.40	11.5	4.40		11.5	4.40	
Penton Hook Lock	11.30	5.5	11.30	5.5		11.30	5.5	
Staines (Town Hall Steps) ..	11.50	5.25	11.50	5.25		11.50	5.25	
Bell Weir Lock	p.m.		p.m.			p.m.		
Runnymede Pleasure Grounds	12.5	5.40	12.5	5.40		12.5	5.40	
Old Windsor Lock	12.15	5.50	12.15	5.50		12.15	5.50	
Windsor Bridge	12.40	6.20	12.40	6.20		12.40	6.20	
Windsor Bridge	1.30	7.0	1.30	7.0		1.30	7.0	
Windsor Bridge	a.m.		a.m.			a.m.		
Bray Lock	10.15	2.45	10.15	2.45		10.15	2.45	
Boulter's Lock for Maidenhead	11.15	3.45	11.15	3.45		11.15	3.45	
Cookham Lock	11.50	4.30	11.50	4.30		11.50	4.30	
Bourne End	p.m.		p.m.			p.m.		
Marlow Lock	12.25	4.50	12.25	4.50		12.25	4.50	
Marlow (Higginson Park) ..	12.35	5.5	12.35	5.5		12.35	5.5	
Marlow (Higginson Park) ..	1.0	5.45	1.0	5.45		1.0	5.45	
Marlow (Higginson Park) ..	1.15	6.0	1.15	6.0		1.15	6.0	
Marlow (Higginson Park) ..						a.m.	p.m.	
Hurley Lock						9.30	3.0	
Hambleton Lock						10.0	3.35	
Henley (Hobbs' Station Stage) ..						10.0	3.0	
Marsh Lock						10.40	4.10	
Shiplake Lock						11.0	5.0	
Sonning Lock						11.0	5.5	
Reading—						11.30	5.35	
Caversham Bridge						p.m.		
Caversham Bridge						12.10	6.5	
Caversham Bridge						6.5		
Caversham Bridge						6.40		
Caversham Bridge						6.45		
Caversham Bridge						a.m.		
Mapledurham Lock						10.0	10.0	
Whitchurch Lock						10.40	10.40	
Goring Lock						11.5	11.5	
Wallingford Bridge						11.45	11.45	
Benson Landing Stage .. .						p.m.		
Benson Landing Stage .. .						1.0	1.0	
Day's Lock						1.15	1.15	
Clifton Lock						3.0	3.0	
Culham Lock						3.30	3.30	
Abingdon Bridge						4.5	4.5	
Sandford Lock						4.40	4.40	
Iffley Lock	a.m.	p.m.	a.m.	p.m.		a.m.	p.m.	
Oxford Folly Bridge	11.30	5.15	11.30	5.15		11.30	5.15	
Sandford Lock	p.m.		p.m.			p.m.		
Iffley Lock	12.30	6.20	12.30	6.20		12.30	6.20	
Oxford Folly Bridge	12.55	6.40	12.55	6.40		12.55	6.40	
	1.10	7.0	1.10	7.0		1.10	7.0	

Approximate times are given, but punctuality is not guaranteed. At Surbiton, Long Ditton, and at Bourne End passengers must arrange to be ferried out, as the Steamers do not come alongside any landing stage. Passengers intending to embark at Anglers' Wharf, Walton, should hail the Steamer, otherwise the boat will proceed without stopping.