

Dining and Real Ale Trains

On selected days we operate special early evening Fish and Chip Supper and Real Ale Trains whilst travelling along the Spa Valley Railway. With fares from a bargain £15 you can travel on two return trips and be served with a meal of your choice. In standard class food is served in a heat retaining container, normally prior to departure at 18:45. Other options may also be available.

Drinks, including real ale from local breweries, are available on these special trains. Advance booking is essential so that we can have the meal ready on the day. Vegetarian options are available.

Seats for the Real Ale Train only are also available (for two return trips), and may either be booked in advance or will be available on the day subject to space being available.

A midweek Fish and Chip lunch train also operates on selected mid week dates leaving Tunbridge Wells West at 12.15. Advance booking is essential.

Wine and Dine Trains

A three course meal prepared by a professional chef will be served at your seat as the Wealden countryside slips slowly past. Enjoy drinks from our bar car en route. Please contact the railway for sample menus, fares and times.

Special evening events will include a cocktail evening on June 15th and a Murder Mystery evening on 20th July.

See the calendar for current dates. These and any additional dates are published on our website, www.spavalleyrailway.co.uk



Photography - David Staines

Your Railway Needs You!

The Spa Valley Railway is managed and operated by volunteers. We are always looking for new volunteers to help run the railway. There is a wide range of jobs including Train Crew, Painters, Engineers, Gardeners, Administrators, Caterers... the list really is endless. We will provide training where necessary, so this is a chance to learn new skills. The age range of existing volunteers is from 14 to 80 plus, and they come from all walks of life. Our volunteers are members of a supporting society, membership of which gives them, amongst other things, a regular society magazine and travel benefits. If you would like the opportunity to do something constructive with your spare time, you can be assured of a friendly welcome. Please introduce yourself to one of our volunteers, give the railway a call, or pick up one of our membership leaflets today.

2013 Trains: Trains run on the dates shown in colour. Please refer to the timetable below.

2013	Sat	Sun	Mon	Tues	Wed	Thur	Fri	Sat	Sun	Mon	Tues	Wed	Thur	Fri	Sat	Sun	Mon	Tues	Wed	Thur	Fri	Sat	Sun	Mon	Tues	Wed	Thur	Fri	Sat	Sun	Mon	Tues	Wed	Thur	Fri	Sat	Sun	
January				1	2	3	4	5	6	7	8	9	10	11	12	13	14	15	16	17	18	19	20	21	22	23	24	25	26	27	28	29	30	31				
February								1	2	3	4	5	6	7	8	9	10	11	12	13	14	15	16	17	18	19	20	21	22	23	24	25	26	27	28			
March								1	2	3	4	5	6	7	8	9	10	11	12	13	14	15	16	17	18	19	20	21	22	23	24	25	26	27	28	29	30	31
April			1	2	3	4	5	6	7	8	9	10	11	12	13	14	15	16	17	18	19	20	21	22	23	24	25	26	27	28	29	30						
May					1	2	3	4	5	6	7	8	9	10	11	12	13	14	15	16	17	18	19	20	21	22	23	24	25	26	27	28	29	30	31			
June	1	2	3	4	5	6	7	8	9	10	11	12	13	14	15	16	17	18	19	20	21	22	23	24	25	26	27	28	29	30								
July		1	2	3	4	5	6	7	8	9	10	11	12	13	14	15	16	17	18	19	20	21	22	23	24	25	26	27	28	29	30	31						
August						1	2	3	4	5	6	7	8	9	10	11	12	13	14	15	16	17	18	19	20	21	22	23	24	25	26	27	28	29	30	31		
September					1	2	3	4	5	6	7	8	9	10	11	12	13	14	15	16	17	18	19	20	21	22	23	24	25	26	27	28	29	30				
October				1	2	3	4	5	6	7	8	9	10	11	12	13	14	15	16	17	18	19	20	21	22	23	24	25	26	27	28	29	30	31				
November						1	2	3	4	5	6	7	8	9	10	11	12	13	14	15	16	17	18	19	20	21	22	23	24	25	26	27	28	29	30			
December																																						
January 2014					1	2	3	4	5	6	7	8	9	10	11	12	13	14	15	16	17	18	19	20	21	22	23	24	25	26	27	28	29	30	31			

GREEN - STANDARD TIMETABLE - Weekends and Bank Holidays

	1(2)	2	1	2	1
Tunbridge Wells West dep	10:10	11:55	13:19	14:55	16:19
High Rocks dep	10:17	12:02	13:26	15:02	16:26
Groombridge dep	10:26	12:11	13:35	15:11	16:35
Eridge arr	10:44	12:20	13:44	15:20	16:44

	2	1	2	1	2
Eridge dep	11:10	12:30	14:10	15:30	17:06
Groombridge dep	11:26	12:46	14:26	15:46	17:22
High Rocks dep	11:33	12:53	14:33	15:53	17:29
Tunbridge Wells West arr	11:40	13:00	14:40	16:00	17:36

PURPLE - OFF PEAK Multiple Unit Services

Tunbridge Wells West dep	10:10	11:45	13:18	14:45	16:00
High Rocks dep	10:17	11:52	13:25	14:52	16:07
Groombridge dep	10:26	12:01	13:34	15:01	16:16
Eridge arr	10:43	12:13	13:46	15:13	16:28

Eridge dep	11:10	12:20	14:10	15:20	16:35
Groombridge dep	11:24	12:34	14:24	15:34	16:51
High Rocks dep	11:31	12:41	14:31	15:41	16:58
Tunbridge Wells West arr	11:38	12:48	14:38	15:48	17:05

YELLOW - MIDWEEK and OFF PEAK Steam Services

Tunbridge Wells West dep	10:50	12:15	14:15	15:30
High Rocks dep	10:57	12:22	14:22	15:37
Groombridge dep	11:05	12:30	14:30	15:45

No service to Eridge on Yellow Timetable days

Groombridge dep	11:25	13:00	14:50	16:00
High Rocks dep	11:32	13:07	14:57	16:07
Tunbridge Wells West arr	11:40	13:15	15:05	16:15

On Standard (Green) timetable days, alternate trains will normally be operated by Steam and Diesel locomotives. Loco 1 is scheduled to be Steam on Sunday and Diesel all other days. Loco 2 is scheduled to be Diesel on Sunday and Steam all other days. Please check our website or local notices for any late notice locomotive or timing alterations.

On off peak (Purple) days trains are scheduled to be formed of one of our Diesel Multiple Units.

On off peak (Yellow) days trains will not operate to Eridge and are scheduled to be hauled by a Steam Locomotive (unless otherwise indicated), however in unavoidable circumstances a Heritage Diesel Locomotive may be used.

SPECIAL TIMETABLE - X EVENT DAYS / SPECIAL TIMETABLE

Please visit www.spavalleyrailway.co.uk or phone for details prior to the event

SPECIAL TIMETABLE - T "A Day Out With Thomas"

Advance booking recommended. NOTE: High Rocks and Groombridge stations will be CLOSED on these dates.

SPECIAL TIMETABLE - S SANTA SPECIALS

Advance booking recommended

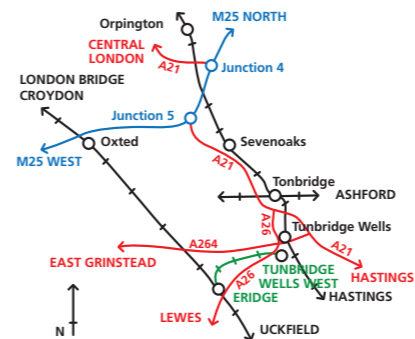
Fish & Chip Train (See website or special leaflet for times and booking details)

Sunday Lunch Train (See website or special leaflet for times and booking details)

Fish & Chip - Supper on 23rd Feb, 23rd March, 20th April, 25th May, 22nd June, 20th July, 10th & 24th August, 7th & 28th September, & 26th October.

Fish & Chip - Lunch on 22nd Feb, 25th April (D), 6th May, 13th June, 5th, 11th & 25th July, 16th August & 19th September.

Sunday Lunch on 24th March, 21st April, 26th May, 30th June, 28th July, 25th August, 29th September & 27th October.



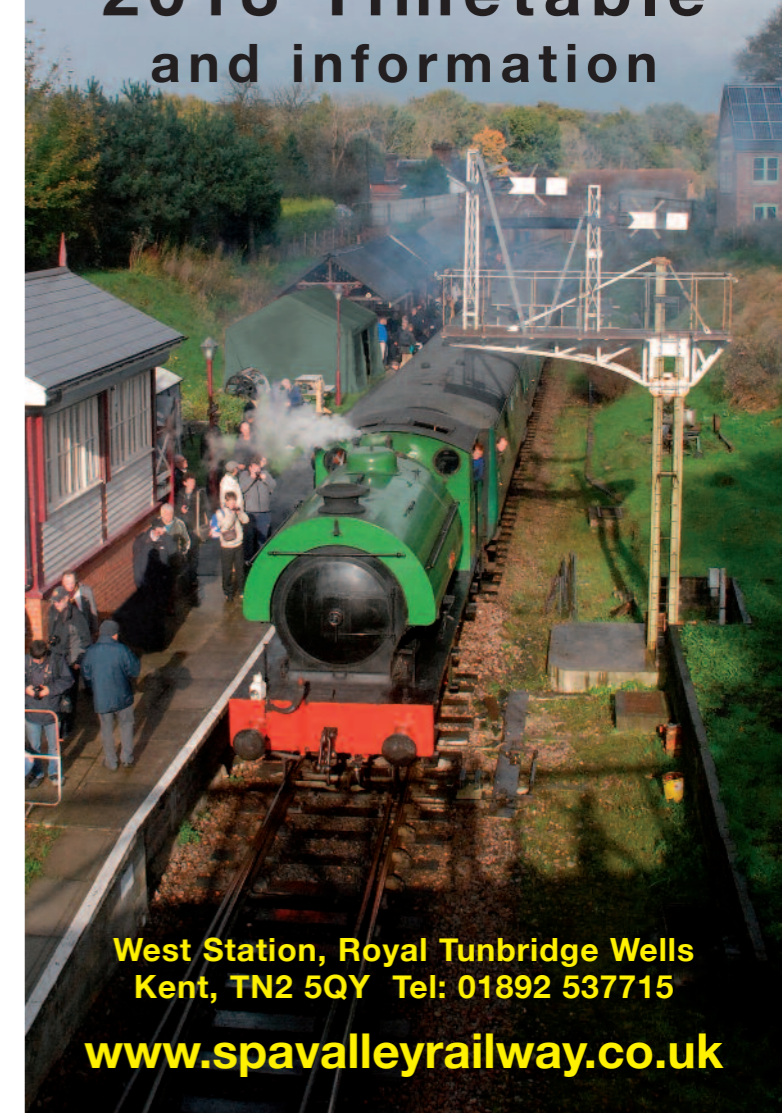
Getting there: By road: approximately 35 miles from central London, 18 miles from Junction 5 of the M25 via the A21, then either the A26 or A264 to Tunbridge Wells Town Centre. West station is adjacent to the Sainsbury's superstore off the A26 Eridge Road, follow the brown tourist signs once you are in the town centre. There are pay and display car parks nearby at Union House and Linden Close. Coach Park in Linden Park Road. Sat Nav TN2 5QY. Please note that the Sainsbury's car park is for their customers only. There is a large free car park at the High Rocks Inn. Sat Nav TN3 9JJ. Please do not park at Groombridge Station. Eridge station is located off the A26. Follow the signs to the main line station. Car park available. Sat Nav TN3 9LE.

By train: By Southern to Eridge. Spa Valley Trains share Eridge Station with National Rail Services. Regular through trains to Eridge from London Bridge, Croydon, Oxted, Uckfield and Intermediate Stations. Through tickets are available from your local 'Southern' station. By Southeastern to Tunbridge Wells, then either a short bus ride or a pleasant 10 minute walk down the hill along the High Street and Pantiles. Frequent local bus services stop at Sainsbury's.



Eridge – Groombridge – High Rocks
Tunbridge Wells West

2013 Timetable and information



West Station, Royal Tunbridge Wells
Kent, TN2 5QY Tel: 01892 537715

www.spavalleyrailway.co.uk

Take the Spa Valley train for a day out in itself or to visit one of the many established tourist attractions served by the railway. Spa Valley trains have returned to **Eridge** providing interchange with National Rail 'Southern' main line services from London Bridge, Croydon and stations on the Uckfield line. Come by rail and make it a real day out on the train. Sample Eridge to Tunbridge Wells fares £10 adult, £5 child return. Different fares may apply during special events. Valid for unlimited travel except on event days.

At **Groombridge** village there is a traditional green, historic pub and picturesque church. A short walk from the station brings you to award winning Groombridge Place Gardens and the 'Enchanted Forest', designed to celebrate history, mystery and intrigue. The gardens feature a 17th Century manor house set in a moat dating back to 1230. Joint railway / admission tickets available. The start of the 'Forest Way' cycle trail is also close by. Sample Tunbridge Wells to Groombridge fares £8 adult, £4 child return.

Adjacent to the **High Rocks** Halt there are acres of sandstone outcrops to explore, linked by ornamental bridges. Discount admission is available for railway ticket holders. The station is next to the High Rocks Inn, Restaurant and Banqueting Complex. An ideal starting point for woodland walks, suggested itineraries are available.

At **Tunbridge Wells**, West station is the headquarters of the railway complete with Victorian engine shed where you can glimpse our collection of historic locomotives and carriages undergoing restoration. There is also a gift shop, buffet and model railway. The Pantiles, an historic colonnaded shopping area is a short walk away. During the summer you can take the waters from the 'Chalybeate' spring at the bath house.



Surrounded by the unspoilt beauty of the Kentish Weald, the Spa Valley Railway lies at the heart of one of England's most beautiful regions. Take a trip by steam train for 5 miles from Eridge through the charming village of Groombridge to High Rocks and on to the town of Royal Tunbridge Wells, in an area rich in scenery and heritage. The railway frequently operates 'Kate', our award winning buffet and bar car, providing hot and cold drinks, snacks, cream teas and a licensed bar en-route. Make it a great day out by using the train to visit attractions along the line.

Special Events 2013

Thurs 21st to Sat 23rd February	Half Term Treat specials - DEMU 1317 on Thur, Steam Fri & Sat
Sat 2nd & Sun 3rd March	Main Season Opening Weekend - Special Discount Fares
Sun 10th March	Mothers Day - All Mums travel for £1. Cream Teas available to book
Sat 23rd & Sun 24th March	New Members / Volunteers weekend
Fri 29th March to Mon 1st April	- Free travel for those joining on the day
20th & 21st April	Easter Specials - Childrens quiz with egg prizes
Sun 28th April	Steam weekend - All services steam hauled
11th, 12th, 18th & 19th May	Family magic day - Juggling & magic including a chance to have a go
Sat 25th May	"A Day Out with Thomas" event (No service to Eridge)
Sun 9th June	Morris Men & Cars - Two British traditions in one event
Sun 16th June	Meet Timmy from Timmy Time (No service to Eridge)
Sat 22nd & Sun 23rd June	Fathers Day (No service to Eridge)
Sat 13th July	Steaming through the 40's
Fri 2nd to Sun 4th August	Gilbert & Sullivan day
Sat 17th & Sun 18th August	Summer Diesel Gala (No Steam this weekend)
Thurs 22nd August	Teddy's day out
Sat 14th & Sun 15th September	Meet Peppa Pig
Sat 21st September	Annual Steam Gala
5th, 6th, 12th & 13th October	Meet Fireman Sam
Fri 18th to Sun 20th October	"A Day Out with Thomas" event
Thursday 31st October	3rd Annual Spa Valley / CAMRA Beer & Cider Festival
30th November	- Diesel Gala Fri & Sat only, Steam & Diesel on Sun
1st, 7th, 8th, 14th, 15th & 21st to 24th December	Halloween special
28th & 29th December, 1st January	Santa Specials
	Kids for a Quid New Year special (accompanied Children £1)

Due to Network Rail engineering work, there will be no Spa Valley Service between Groombridge and Eridge on the following dates in 2013;- 11th, 12th, 18th & 19th May (Day out with Thomas), Sunday 9th & 16th June, and Sunday 13th October (Day out with Thomas). Please check with National Rail Enquiries for train times and any alterations if you intend to use Southern trains to Eridge on other dates.

Private Hire Available

Why not charter a carriage or a whole train for your special event?

Weddings and birthdays are a speciality. Children's birthday parties an established favourite. 'Kate', our award winning bar and buffet car is also available for hire either on a normal service train or as part of a special charter. Driver experience courses on diesel locomotives may also be booked. For all enquiries please phone 01892 537715 or email enquiries@spavalleyrailway.co.uk.

Please ask for our 'special occasions' leaflet.

www.spavalleyrailway.co.uk

Members / Volunteers day – Sat 23rd & Sun 24th March
Come and look behind the scenes and see how you could help run your local railway. Free travel for those joining on the day.

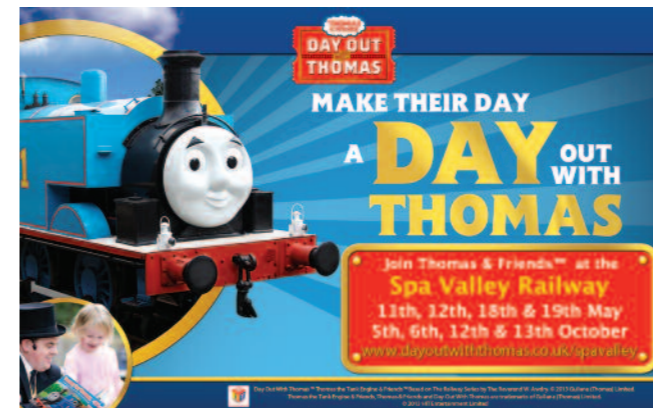
Steam Weekend – 20th & 21st April
All Services steam hauled.

Easter Specials – Fri 29th March – Mon 1st April
On Sunday and Monday Easter bunny hunt, plus Easter eggs for visiting children.

Meet Timmy from Timmy Time – Sun 9th June

Steaming through the 40s – Sat 22nd & Sun 23rd June
One of the major events in the railway's calendar. Experience the 1940s on the railway, Army vehicles and personnel, 1940s cooking, dancing and a variety of linked attractions. For more details please check the website or contact the railway nearer the event.

Summer Diesel Gala – Fri 2nd – Sun 4th August
Our annual heritage diesel three day extravaganza with a special intensive service. No steam on these days.



Teddy's day out – 17th & 18th August
Take teddy out for the day! All accompanied children who bring a teddy travel for £1 (and teddy goes free!)

Meet Peppa Pig – Thurs 22nd August

Annual Steam Gala – Sat 14th & Sun 15th September
Our annual steam gala. All available locomotives in steam and perhaps a visiting engine.

Meet Fireman Sam – Sat 21st September

CAMRA beer festival – Fri 18th – Sun 20th October
Plenty of real ale from breweries near and far.

Details and a booking form for 'Day Out with Thomas and 'Santa Special' events will be available from the railway and on our website at least three months prior to the events. Advance booking is strongly recommended for these popular events to avoid disappointment.

For more details of all special events please visit www.spavalleyrailway.co.uk

GROOMBRIDGE PLACE GARDENS & ENCHANTED FOREST



Groombridge Place Gardens and the Enchanted Forest is a fabulous mix of quintessentially English formal gardens set alongside wild and whacky woodland play areas where children can let their imagination run riot. There is something to entertain all the family for many hours – and a visit to see Adam the zeedonk, who is half zebra and half donkey, is not to be missed.

The formal gardens were designed in the 17th century by the fashionable designer of the day, John Evelyn, and are still laid out in the same style today. Clever planting ensures year-round colour and scent, with the surrounding mellow walls providing shelter and warmth on breezy days.

Special joint tickets offering worthwhile savings are available for Groombridge Place Gardens & The Spa Valley Railway.

THE HIGH ROCKS

The magnificent High Rocks are steeped in history dating back millions of years. Acres of breathtaking sandstone rocks are interlined with eleven bridges. Visitors have been fascinated by the rocks for hundreds of years, providing a constant source of wonder. The rocks are located two minutes walk from the Spa Valley's High Rocks Halt. Reduced admission is available on production of a valid Spa Valley Railway Ticket.