

Canal Trips

Our 12 seater 'Egremont' operates scheduled trips daily from the Canal Basin at: 10.30am, 12 noon, 2.00pm and 3.30pm. Call the Canal Shop : 01243 771363.

The 'Richmond' is a wide beam boat with comfortable seating for 28, up to a maximum of 42 passengers.

Both boats can be chartered for special occasions; lunch, tea, cream tea, dinner, birthdays or anniversaries. All cruises include use of crockery, cutlery and glasses with a buffet table if required. There is no charge for corkage should you decide to bring your own wine.

Rowboating

Boats can be hired from March until October. Minimum age for hiring 16.

Canoeing & Boating

Canoeing day tickets available at the Canal Basin Shop, or you can apply for an annual licence.

Angling

The canal is well stocked with carp, roach, tench, bream, perch, rudd, gudgeon and pike. Great value. Tickets obtainable from the Water Bailiff.

Towpath

The towpath is ideal for walkers, runners and cyclists, where a variety of wildlife can be seen all the way from the Basin to the harbour at Birdham.

Wild flowers

As the Canal has not been used commercially for many years it has been colonised by a range of our more unusual wild flowers and plants. The following wild flowers may be found along the Canal banks: Willow Herb, Yellow Flag, Meadowsweet, Speedwell, Water Plantain, Dock, the Lesser Water Parsnip and the rare Lesser Reedmace.

Painting

The towpath has been a popular spot for artists ever since Turner painted his famous picture of the Chichester Canal and Cathedral in 1829, whilst staying in Petworth House.

Bird watching

The Canal is a natural habitat for a wide range of bird life, the more common waterfowl; moorhens, coots, mallards and swans as well as herons, kingfishers, whitethroats, common sandpipers and terns.

Membership

If you have any spare time and wish to become a member to join our friendly group of volunteers who help with canal restoration, staffing the shop, crewing and maintaining the boats, find out more by dropping into the Canal Shop and chatting to some of our other volunteers. Alternatively visit our website:

www.chichestercanal.com
volunteer@chichestercanal.com

Chichester Ship Canal

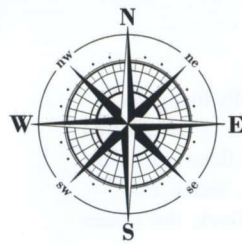


"It was a beautiful outing, we all thoroughly enjoyed the trip and the Volunteers were so helpful. We will certainly come again"

E. Turner, Worthing

A Brief History...

- 1819** Construction authorised by Parliament
- 1822** Canal opened. Total length from Chichester to the sea 4 miles and could take vessels up to 150 tons.
- 1892** Ownership transferred from the Portsmouth and Arundel Navigation Company to Chichester City Council.
- 1906** The last commercial cargo carried.
- 1928** Chichester City Council abandoned the Canal.
- 1957** WSCC purchased the Canal from Chichester City Council.
- 1972** The main part of the Canal let to the Chichester Canal Anglers Association for a term of 28 years.
- 1984** The Anglers relinquished their lease, which was taken over by the Chichester Ship Canal Trust



Scale: Approx. 3 inches = 1 mile



A BRIEF HISTORY OF THE CHICHESTER CANAL

- 1819 Construction authorised by Parliament
- 1822 Canal opened. Total length from Chichester to the sea 4 miles, and could take vessels up to 150 tons.
- 1892 Ownership transferred from the Portsmouth and Arundel Navigation Company to Chichester City Council.
- 1906 The last commercial cargo carried.
- 1928 Chichester City Council abandoned the canal.
- 1957 WSCC purchased the canal from Chichester City Council.
- 1972 The main part of the canal let to the Chichester Anglers' Association for a term of 28 years.
- 1984 The Anglers relinquish their lease which, is taken over by the Chichester Canal Society, now the Chichester Ship Canal Trust.



CHICHESTER CANAL BASIN

Parking Angling Canoeing
Rowboating Tripboat

STOCKBRIDGE

DONNINGTON

Parking HUNSTON

CHICHESTER MARINA

BIRDHAM

HOW TO JOIN THE CHICHESTER SHIP CANAL TRUST

Mrs. Linda Wilkinson
1, Chidham Lane, Chidham,
Chichester, PO18 8TL
Tel: 01243 576701

Help to improve and restore the Canal by joining the Trust. The Chichester Ship Canal Trust is a registered charity dedicated to the restoration and re-opening of this historic waterway to through-navigation between Chichester and the Harbour. Please support our aims by joining the Trust – details above.



Take a ride on our trip boats

Trips lasting just over an hour on our scheduled sailings, which are accessible to disabled and elderly people, leave from the Canal Basin. Further information including details of charters is available at the Canal Basin or you can telephone the number included inside this leaflet.



Come Rowboating on the Canal

Skiffs can be hired at the Canal Basin between March and October. What could be better than a leisurely row down the Canal?



Canoeing and small boats

Canoeing is permitted by arrangement for a small charge. If you wish to canoe on the Canal, you can purchase a day permit at the Canal Basin or apply for an annual licence.



Angling

The stretch of Canal between Chichester and Donnington Bridge is renowned for its coarse fishing. Carp are plentiful and there are good stocks of roach, rudd, perch, bream and tench as well as some monster pike. There are also some chub and dace together with gudgeon and eels. Day, weekly and season tickets can be purchased from the bailiff.



Take a stroll down the Towpath

The Chichester Canal runs for 4 miles from the Canal Basin in Chichester to the Harbour at Birdham, most of the way through open farmland; just the place to take a stroll or have a picnic.

Published by The Chichester Ship Canal Trust
The Trust is a registered charity No. 1094873

Watch out for Wild Flowers

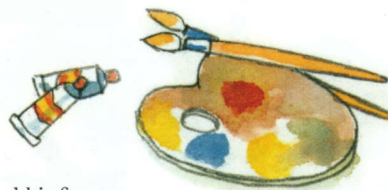
As the Canal has not been used commercially for many years, it has been colonised by a range of our more unusual wild flowers and plants.



Willow-herb, yellow flag, meadowsweet, speedwell and the less common water plantain, dock and lesser water parsnip are all to be found there. See how many different varieties you can identify!

Painting

The towpath has been a popular spot for artists ever since



J.M.W. Turner painted his famous picture of the Chichester Canal and Cathedral in 1828, whilst staying at Petworth House.



Try some Bird Watching

The Canal is habitat for a wide range of bird life. As well as the more common waterfowl – moorhens, coots, mallard and swans – birds such as the heron, kingfisher, whitethroat, common sandpiper, spotted flycatcher and greater spotted woodpecker can be seen. Sedge and reed warblers visit the Canal in the summer. For the sharp-eyed observer there may be other unusual sightings in store!

Cycling

Cycling is permitted on the towpath, but please give way to pedestrians and show consideration to all other users by keeping your speed down. The towpath is narrow in places so due care must be taken.

Car Parking

Visitors' car parking is available at the Canal Basin, on the A27 By-Pass Bridge, in Hunston Car Park and at Chichester Marina.



In partnership with



Do visit our website: www.chichestercanal.org.uk

THE CHICHESTER SHIP CANAL MAKE THE MOST OF IT!



Rhythm & Cruise

These evening cruises are ideal for relaxing after a week at work and prepare you for a pleasant weekend. Relax with complimentary wine and savoury nibbles whilst listening to an accomplished music duo coupled with the ever changing scenery of the Chichester Ship Canal.



Departing from the canal basin at:
6.30pm and return at 8.15pm.

Fare: Adult: £13.50
(inclusive)



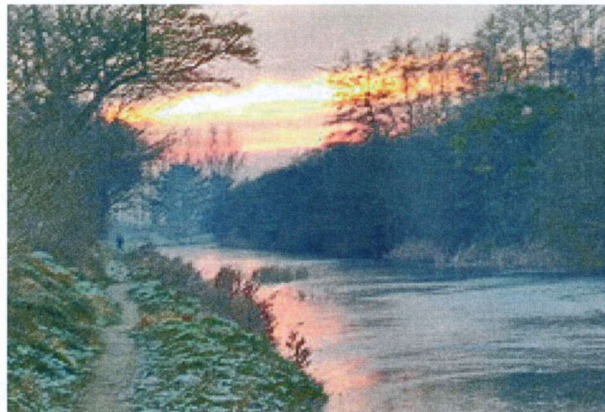
Friday evenings

- 27th May** Jazz & music from 60's
- 10th June** Jazz standards & blues
- 1st July** Smooth jazz & blues
- 29th July** Jazz & dance music
- 5th Aug** Jazz, blues & humour
- 16th Sept** Jazz & soul music

Call Val: 01243 377405

Sundowner Cruises

The perfect way to unwind and relax after a hectic week...



These Friday evening cruises depart from the canal basin at:

6.30pm and return at 8.15pm.

Relax with complimentary wine or fruit juice and savoury nibbles, glide away into the countryside, and hear about the wildlife and history of the canal.

Fare: Adult: £8.00 (inclusive)

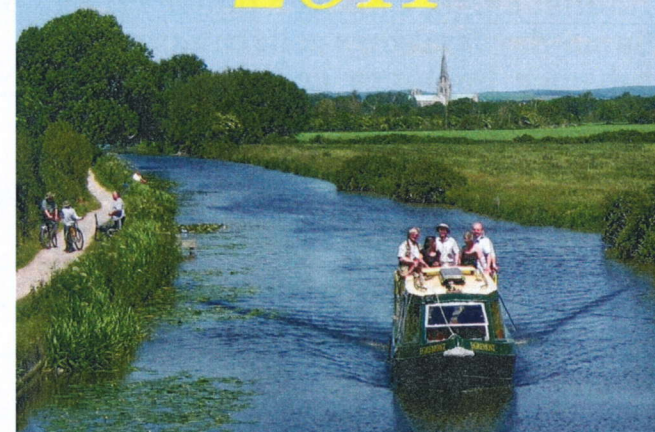
Friday evenings

- 20th May**
- 17th June**
- 15th July**
- 19th August**
- 2nd September**

Book early to avoid disappointment.

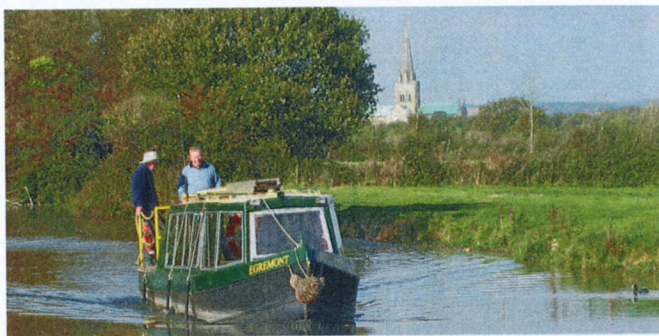
Call Val: 01243 377405

Chichester Ship Canal Trips & Charges 2011



Chichester Canal Trading Ltd
Registered Office: Chichester Canal Basin, Canal Wharf, Chichester PO19 8DT.
Registered in England & Wales, No. 03660152 (V.A.T. number 744-9289-88)

'EGREMONT' DAILY SCHEDULED TRIPS



Licensed to carry up to 12 Passengers

10.15am* 12.00pm 1.45pm 3.30pm

Adults: £5.50, Children under 12: £3.50

Same-day bookings call: 01243 771363

Advance bookings call: 01243 377405

***Free tea/coffee from the shop for the Early Bird 10.15am trip**

EVENING CHARTERED TRIPS

(Departing after 5.00pm)

2 Hours £130

"RICHMOND"

Wide-beam boat seating up to 42 passengers.



'RICHMOND' CHARTERED DAYTIME TRIPS

Comfortable seating for 28, maximum 42

TYPES OF CRUISES

Standard: Cruise to Donnington and return.

Tea: Cruise as above, including tea or coffee with choice of sponge cakes.

Cream Tea: Cruise as above, including tea or coffee with choice of sponge cakes & scones with jam and cream.

Bargee's Lunch: Cruise as above, including tea, coffee, wine or beer with an individual Ploughman's lunch of bread, pickle, coleslaw, salad, tomato & choice of cheese.

2 Hour Day Cruises

Groups No's	Standard	Tea Cruise	Cream Tea	Bargee's Lunch
15	£90	£135	£155	£175
25	£150	£230	£255	£290
30	£180	£275	£305	£345
35	£210	£320	£360	£405
40	£240	£365	£410	£460
42	£270	£400	£445	£500

CHARTERED EVENING TRIPS

(Departing after 5.00pm)

2 hrs £240 2½ hrs £300 3 hrs £360

You may provide your own catering or we can recommend the following caterers:

Rosemary Hansford 01243 865284
Carol Swan 01243 530405
Annie Boutwood 01243 537878
Chris Adams at "Rkdia" 02392 595158

CHARTERED TRIPS



Both the Egremont and Richmond boats can be hired for private events. The narrow boat Egremont seats up to 12 and the Richmond provides comfortable seating for 28, with a maximum of 42 passengers.

Our cruises provide a unique venue for a party to celebrate your special occasion, birthday, or anniversary; whilst passing through pleasant countryside with ever-changing scenery and wildlife.

All crockery, cutlery & glassware provided free of charge. You may bring your own food and drinks, there is no corkage charge.

We are able to supply assorted sandwiches or individual salads for just **£2.50** each, also tea, coffee and fruit juice, including re-fills can be provided for **£1.20** per person.

All private cruises are pre-bookable only, a non-returnable deposit of **£30.00** for the Egremont and **£50.00** for the Richmond is payable to reserve your booking, with the **balance due 14 days prior to the trip.**

Cheques to be made payable to:

"Chichester Canal Trading Ltd"

and sent to:

**Mrs V Owen, 9 Old Rectory Close,
EMSWORTH, PO10 8UB**

For further information and reservations:

Call Val: 01243 377405

THURSDAY 30th. JUNE 7.30pm TALK Chichester Canal Restoration. An update on the restoration of the canal from Chichester to the sea. At the Council Chamber, West S.C.C. West Street, Chichester. Tickets £3.00 on the door.

SATURDAY 9th JULY 7.30pm Mikron Theatre production of Hell and High Water. At Donnington Parish Hall, Stockbridge Road, Chichester. Tickets £7.50.
Sponsored by Linden Homes.

SUNDAY 10th JULY 10am start. A linear **GUIDED WALK** from Salterns Lock by Chichester Marina, along the canal tow path to the basin at Chichester seeing the engineering features and remains. Approx. 4 miles. Parking available at Marina. In conjunction with Sussex Industrial Archaeological Society.

SATURDAY 10th SEPTEMBER 10am start. A linear **GUIDED WALK** along the old Portsmouth and Arundel Navigation tow path from Barnham Court Farm (directions as above) to Hunston. See the engineering remains of the canal along the way. Approx. 6 miles. Bring packed lunch. In conjunction with Sussex Industrial Archaeological Society as part of Heritage Open Days.

SUNDAY 11th SEPTEMBER POYNTZ BRIDGE opens from 10am till 4pm
All details as at JUNE 26th including the Basin walk. In conjunction with Sussex Industrial Archaeological Society as part of Heritage Open Days.

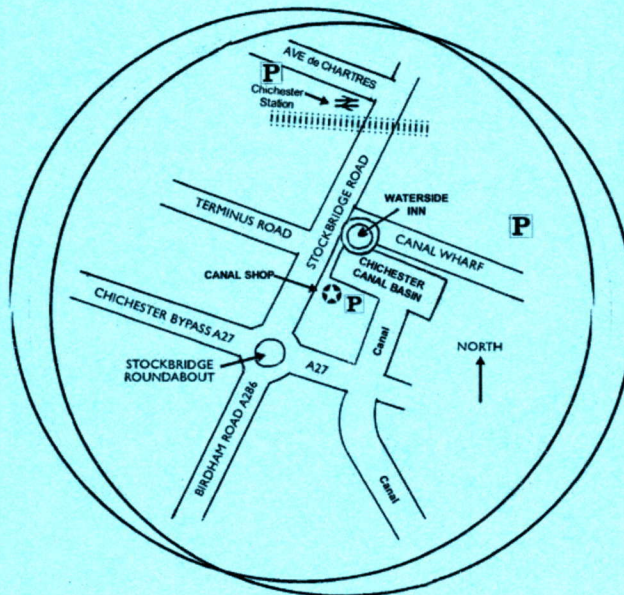
All enquiries to Linda Wilkinson on 01243 576701 or e-mail to canal.linda@uwclub.net

USED STAMPS, PRINTER CARTRIDGES, Old or Foreign COINS

UK, Foreign stamps and empty print cartridges can be converted into money! Please leave any donations of these items at the Canal Basin Shop for the attention of Linda Wilkinson or post to 1 Chidham Lane, Chidham, Chichester PO18 8TL

How to find the canal basin...

By foot from the City Centre walk down South Street and cross the level crossing, the Canal is one minute south of the Bus & Rail Stations. The entrance to the canal basin is on Canal Wharf, just after the Waterside pub.
If you are coming by car, there are several public car parks close by. There is restricted parking in Canal Wharf Road. There is limited free parking at the Canal Basin adjacent to the Canal Shop that is reserved for visitors to the Canal. Otherwise the nearest are the Canal Wharf and Ave de Chartres.



Web: www.chichestercanal.com

The Chichester Ship Canal

If you have any spare time and want to make new friends and help to improve our environment why not join our friendly bunch of volunteers by helping to staff the shop or crew the boats. Please join us to help you in a fulfilling way by teaching you new skills.
Call Alison **01243 536933**

WHAT'S ON AT THE CANAL IN 2011

Scheduled trips:

The narrow boat '**Egremont**' seats up to 12 passengers. Scheduled 1¼ hour trips operate daily from the Canal Basin at:

10:15am, 12 noon, 1.45pm and 3:30pm.

Wheelchair access available, but please arrive in plenty of time for boarding.

Fares: Adult £5.50 Child (under 12) £3.50

Turn up on the day, or to guarantee your seat call: **01243 377405**

Fares payable at the Canal Shop prior to departure.

Chartered Cruises:

The "Egremont" can be hired after 5.00pm for private trips. Fare 2 hours: £130.

The "Richmond", a wide beam boat provides comfortable seating for 28 with a maximum of 42 passengers. Our cruises provide a unique venue to celebrate your special occasion whilst passing through pleasant countryside with ever changing scenery and wildlife.

All cruises include use of crockery, cutlery & glasses, with buffet table if required. You may provide your own food & drinks there is no corkage charge.

For information and reservations call bookings manager Val Owen **01243 377405**

Easter Bunny Boat Trips

10th April to 25th April 2011

(Bookings open 14th March)

Enjoy a springtime trip down the canal and meet the elusive Easter Bunny. Personalised presents, biscuits, chocolates & drinks for the children, refreshments & hot cross buns for the adults, a pleasant trip and fun for everyone!

Fare: Adult or Child - £8.00

Advance booking absolutely essential!

Call Val Owen on **01243 377405** between **9.00am and 7.00pm**.

Sundowners boat trips

The perfect way to unwind after a hectic week...

These Friday evening trips depart from the canal basin at **6.30pm and return at 8.00pm**.

Relax with a glass of wine and savoury nibbles, glide away into the countryside, and hear about the wildlife and history of the canal.

Price per adult: £8.00 inclusive. Schedule:

20th May, 17th June, 15th July, 19th August and 2nd September

Book early to guarantee your seats.

Call Val Owen **01243 377405**.

Rhythm & Cruise trips...

Switch off from work and prepare for an enjoyable weekend with a relaxing trip combining pleasant music and the ever-changing scenery of the Chichester Ship Canal.

These Friday evening trips normally depart from the canal basin at **6.30pm and return at 8.00pm**. Relax listening to an accomplished music duo, with free wine and savoury nibbles.

Price per adult: £13.50 inclusive. Schedule:

27th May, 10th June, 1st July, 29th July, 5th August, and 16th September.

These trips are very popular, please book early.
Call Val Owen **01243 377405**.

Father Christmas boat trips

26th Nov to 24th Dec 2011.

(Bookings open Monday 10th October)

Meet Father Christmas down the Canal. Personalised presents for the children and festive refreshments for all.

Advanced bookings absolutely essential.

Telephone bookings: **0845 6530210**

Fare: Adult or Child £9.00.

For further information check our website:
www.chichestercanal.com

ROWBOAT HIRE

From 1st April until 31st October from the Canal Basin 9.00am-5.00pm.

£8.00 for 1 hour, £5.50 for half hour.

N.B. minimum age for hiring 16, Refundable deposit of £10.00 required.

Latest hire 4.30pm.

ANGLING

January to December 2011

The Canal holds good stocks of roach, perch, common, crucian & mirror carp, bream, tench, pike and eels plus some dace and chub. Great value. Tickets from the Water Bailiff

Season ticket £45.00 (£23.00). Week £12.00 (£7.00). Day £4.00 (£2.00).

Bracketed prices are for OAPs, registered disabled persons and children (under 16).

No Fish to be removed. Rod Licence obligatory.

No Closed Season.

CANOEING & UNPOWERED BOATS

Canoeing day tickets available at the Canal Basin, price £2.00.

Season tickets £15.00.

End of Season tickets (1/9 to 31/12) £10.00.

Contact: Stuart Hillary, Beaufort House, Elms Lane, West Wittering, PO20 8LW.

Tel: **01243 513377**

SHOP AND REFRESHMENTS

There is a well-stocked shop at the Canal Basin selling light refreshments with outside seating in a lovely setting ideal for the casual visitor. or if you are waiting for your boat trip.

The shop is run by volunteers who are happy to provide any information on the Canal.

Tel: **01243 771363**

Shop opening times daily generally

Winter 9.30am – 3.30pm

Summer 9.30am – 5.00pm.

THE CHICHESTER SHIP CANAL TRUST CANAL EVENTS IN 2011

TUESDAY 17th MAY:

ANNUAL GENERAL MEETING 7.30pm:

At Donnington Parish Hall, Stockbridge Road, Chichester.

SATURDAY 25th JUNE 10am start. A linear **GUIDED WALK** from Barnham Court Farm, Church Lane, Barnham. (Follow signs from the Murrell Arms) to Ford. Walk along the old tow path of the Portsmouth and Arundel Navigation and see many engineering remains of the canal. Approx. three miles. Parking available at the start. In conjunction with Sussex Industrial Archaeological Society.

SUNDAY 26th JUNE POYNTZ BRIDGE

Open from 10am till 4 pm. situated aprox. 200 yards south of the canal basin, Chichester.

Possibly the only single span 1820 cast iron swing bridge in the UK. Plus a display of photos and artefacts.

At 2pm there will be a guided walk around the canal basin led by Alan Green, illustrating the history of past industry around this canal feature. In conjunction with Sussex Industrial Archaeological Society.