

DINING & REAL ALE TRAINS

On selected evenings we operate special early evening Fish and Chip Supper and Real Ale Trains whilst travelling along the Spa Valley Railway. With fares from a bargain £15 you can travel on two return trips and be served with a meal of your choice. In standard class food is served in a heat retaining container, normally prior to the departure of the 18:45 train. Other options may also be available. Drinks, including real ale from local breweries, are available on these special trains. Advance booking is essential so that we can have the meal ready on the day. Vegetarian options are available.

Seats for the Real Ale Train only are also available (for two return trips), and may either be booked in advance or will be available on the day subject to space being available.



A midweek Fish and Chip lunch train also operates on selected mid week dates leaving Tunbridge Wells West at 12.15. Advance booking is essential.

EVENING WINE & DINE TRAINS

A three course dinner prepared by a professional chef will be served at your seat as the Wealden countryside slips slowly past. Enjoy sunset drinks from the bar car. Please contact the railway for sample menus, fares and times.

Dates will be published on our website, www.spavalleyrailway.co.uk

2012 Trains: Trains run on the dates shown in colour. Please refer to the timetable below.

| 2012 | Sat | Sun | Mon | Tues | Wed | Thur | Fri | Sat | Sun | Mon | Tues | Wed | Thur | Fri | Sat | Sun | Mon | Tues | Wed | Thur | Fri | Sat | Sun | Mon | Tues | Wed | Thur | Fri | Sat | Sun | Mon | Tues | Wed | Thur | Fri | Sat | Sun | |
|--------------|-----|-----|-----|------|-----|------|-----|-----|-----|-----|------|-----|------|-----|-----|-----|-----|------|-----|------|-----|-----|-----|-----|------|-----|------|-----|-----|-----|-----|------|-----|------|-----|-----|-----|--|
| January | | 1 | 2 | 3 | 4 | 5 | 6 | 7 | 8 | 9 | 10 | 11 | 12 | 13 | 14 | 15 | 16 | 17 | 18 | 19 | 20 | 21 | 22 | 23 | 24 | 25 | 26 | 27 | 28 | 29 | 30 | 31 | | | | | | |
| February | | | | | 1 | 2 | 3 | 4 | 5 | 6 | 7 | 8 | 9 | 10 | 11 | 12 | 13 | 14 | 15 | 16 | 17 | 18 | 19 | 20 | 21 | 22 | 23 | 24 | 25 | 26 | 27 | 28 | 29 | | | | | |
| March | | | | | | 1 | 2 | 3 | 4 | 5 | 6 | 7 | 8 | 9 | 10 | 11 | 12 | 13 | 14 | 15 | 16 | 17 | 18 | 19 | 20 | 21 | 22 | 23 | 24 | 25 | 26 | 27 | 28 | 29 | 30 | 31 | | |
| April | | 1 | 2 | 3 | 4 | 5 | 6 | 7 | 8 | 9 | 10 | 11 | 12 | 13 | 14 | 15 | 16 | 17 | 18 | 19 | 20 | 21 | 22 | 23 | 24 | 25 | 26 | 27 | 28 | 29 | 30 | | | | | | | |
| May | | | | 1 | 2 | 3 | 4 | 5 | 6 | 7 | 8 | 9 | 10 | 11 | 12 | 13 | 14 | 15 | 16 | 17 | 18 | 19 | 20 | 21 | 22 | 23 | 24 | 25 | 26 | 27 | 28 | 29 | 30 | 31 | | | | |
| June | | | | | | | 1 | 2 | 3 | 4 | 5 | 6 | 7 | 8 | 9 | 10 | 11 | 12 | 13 | 14 | 15 | 16 | 17 | 18 | 19 | 20 | 21 | 22 | 23 | 24 | 25 | 26 | 27 | 28 | 29 | 30 | | |
| July | | 1 | 2 | 3 | 4 | 5 | 6 | 7 | 8 | 9 | 10 | 11 | 12 | 13 | 14 | 15 | 16 | 17 | 18 | 19 | 20 | 21 | 22 | 23 | 24 | 25 | 26 | 27 | 28 | 29 | 30 | 31 | | | | | | |
| August | | | | | 1 | 2 | 3 | 4 | 5 | 6 | 7 | 8 | 9 | 10 | 11 | 12 | 13 | 14 | 15 | 16 | 17 | 18 | 19 | 20 | 21 | 22 | 23 | 24 | 25 | 26 | 27 | 28 | 29 | 30 | 31 | | | |
| September | 1 | 2 | 3 | 4 | 5 | 6 | 7 | 8 | 9 | 10 | 11 | 12 | 13 | 14 | 15 | 16 | 17 | 18 | 19 | 20 | 21 | 22 | 23 | 24 | 25 | 26 | 27 | 28 | 29 | 30 | | | | | | | | |
| October | | | 1 | 2 | 3 | 4 | 5 | 6 | 7 | 8 | 9 | 10 | 11 | 12 | 13 | 14 | 15 | 16 | 17 | 18 | 19 | 20 | 21 | 22 | 23 | 24 | 25 | 26 | 27 | 28 | 29 | 30 | 31 | | | | | |
| November | | | | | | 1 | 2 | 3 | 4 | 5 | 6 | 7 | 8 | 9 | 10 | 11 | 12 | 13 | 14 | 15 | 16 | 17 | 18 | 19 | 20 | 21 | 22 | 23 | 24 | 25 | 26 | 27 | 28 | 29 | 30 | | | |
| December | 1 | 2 | 3 | 4 | 5 | 6 | 7 | 8 | 9 | 10 | 11 | 12 | 13 | 14 | 15 | 16 | 17 | 18 | 19 | 20 | 21 | 22 | 23 | 24 | 25 | 26 | 27 | 28 | 29 | 30 | 31 | | | | | | | |
| January 2013 | | | 1 | 2 | 3 | 4 | 5 | 6 | 7 | 8 | 9 | 10 | 11 | 12 | 13 | 14 | 15 | 16 | 17 | 18 | 19 | 20 | 21 | 22 | 23 | 24 | 25 | 26 | 27 | 28 | 29 | 30 | 31 | | | | | |

| A - STANDARD TIMETABLE - WEEKENDS & BANK HOLIDAYS | | | | | |
|---|-----|-------|-------|-------|-------|
| | | D(S) | S | D | S |
| Tunbridge Wells West | dep | 10:10 | 11:55 | 13:19 | 14:55 |
| High Rocks | dep | 10:17 | 12:02 | 13:26 | 15:02 |
| Groombridge | dep | 10:26 | 12:11 | 13:35 | 15:11 |
| Eridge | arr | 10:44 | 12:20 | 13:44 | 15:20 |
| | | S | D | S | D |
| Eridge | dep | 11:10 | 12:30 | 14:10 | 15:30 |
| Groombridge | dep | 11:26 | 12:46 | 14:26 | 15:46 |
| High Rocks | dep | 11:33 | 12:53 | 14:33 | 15:53 |
| Tunbridge Wells West | arr | 11:40 | 13:00 | 14:40 | 16:00 |

| B - MIDWEEK AND LOW SEASON | | | | | |
|---|-----|-------|-------|-------|-------|
| Tunbridge Wells West | dep | 10:50 | 12:15 | 14:15 | 15:30 |
| High Rocks | dep | 10:57 | 12:22 | 14:22 | 15:37 |
| Groombridge | arr | 11:05 | 12:30 | 14:30 | 15:45 |
| No service to Eridge on Yellow Timetable days | | | | | |
| Groombridge | dep | 11:25 | 13:00 | 14:50 | 16:00 |
| High Rocks | dep | 11:32 | 13:07 | 14:57 | 16:07 |
| Tunbridge Wells West | arr | 11:40 | 13:15 | 15:05 | 16:15 |

On Standard (Green) timetable days, alternate trains will normally be operated by a Steam "S" locomotive or a Heritage Diesel "D" locomotive. The standard locomotive roster is indicated on the timetable however please check our website or notices for any late notice alterations (S) or (D) indicates a locomotive attached to the rear of the train

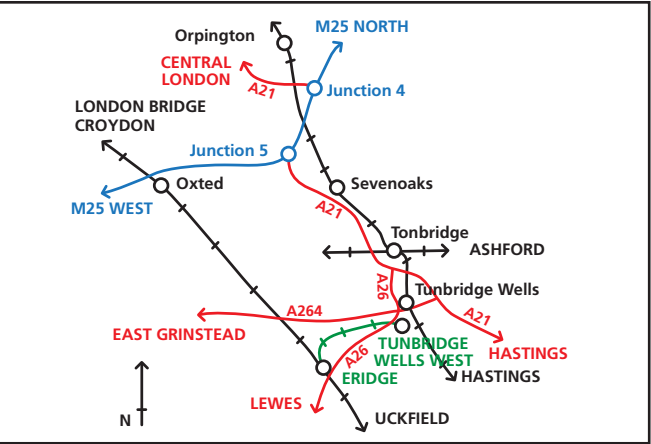
On Low Season (Yellow) timetable days trains will not operate to Eridge and are scheduled to be hauled by the steam locomotive however in unavoidable circumstances a Heritage Diesel Locomotive may be used.

| | |
|-----------------------|--|
| SPECIAL TIMETABLE - X | EVENT DAYS / SPECIAL TIMETABLE Please visit www.spavalleyrailway.co.uk or phone for details prior to the event |
| SPECIAL TIMETABLE - T | "A Day Out With Thomas" Advance booking recommended NOTE: High Rocks and Groombridge stations will be CLOSED on these dates. |
| SPECIAL TIMETABLE - S | SANTA SPECIALS Advance booking recommended |

| FISH & CHIP SUPPER TRAINS | | | |
|--|-----|-------|-------|
| Tunbridge Wells West | dep | 18:45 | 19:50 |
| Tunbridge Wells West | arr | 19:35 | 20:35 |
| FISH & CHIP LUNCH TRAINS | | | |
| Available to book on the 12:15 departure on selected dates | | | |
| Please check website for dates & details | | | |
| Advance booking essential for all dining trains | | | |

Getting there: By road: approximately 35 miles from central London, 18 miles from Junction 5 of the M25 via the A21, then either the A26 or A264 to Tunbridge Wells Town Centre. West station is adjacent to the Sainsbury's superstore off the A26 Eridge Road, follow the brown tourist signs once you are in the town centre. There are pay and display car parks nearby at Union House and Linden Close. Coach Park in Linden Park Road. Sat Nav TN2 5QY. Please note that the Sainsbury's car park is for their customers only. There is a large free car park at the High Rocks Inn. Sat Nav TN3 9JJ. Please do not park at Groombridge Station. Eridge station is located off the A26. Follow the signs to the main line station. Sat Nav TN3 9LE.

By train: By Southern to Eridge. Spa Valley Trains share Eridge Station with National Rail Services. Regular through trains to Eridge from London Bridge, Croydon, Oxted, Uckfield and Intermediate Stations. Through tickets are available from your local 'Southern' station. By Southeastern to Tunbridge Wells, then either a short bus ride or a pleasant 10 minute walk down the hill along the High Street and Pantiles. Frequent local bus services stop at Sainsbury's.



YOUR RAILWAY NEEDS YOU!

The Spa Valley Railway is managed and operated by volunteers. We are always looking for new volunteers to help run the railway. There is a wide range of jobs including Train Crew, Painters, Engineers, Gardeners, Administrators, Caterers... the list really is endless. We will provide training where necessary, so this is a chance to learn new skills. The age range of existing volunteers is from 14 to 80 plus, and they come from all walks of life. Our volunteers are members of a supporting society, membership of which gives them, amongst other things, a regular society magazine and travel benefits. If you would like the opportunity to do something constructive with your spare time, you can be assured of a friendly welcome. Please introduce yourself to one of our volunteers, give the railway a call, or pick up one of our membership leaflets today.



Royal Tunbridge Wells – High Rocks – Groombridge – Eridge



2012 TIMETABLE AND INFORMATION

West Station, Royal Tunbridge Wells, Kent, TN2 5QY Tel: 01892 537715

www.spavalleyrailway.co.uk

Take the Spa Valley train for a day out in itself or to visit one of the many established tourist attractions served by the railway. Spa Valley trains have returned to **Eridge** providing interchange with National Rail ‘Southern’ main line services from London Bridge, Croydon and stations on the Uckfield line. Come by rail and make it a real day out on the train. Sample Eridge to Tunbridge Wells fares £10 adult, £5 child return. Different fares may apply during special events.

At **Groombridge** village there is a traditional green, historic pub and picturesque church. A short walk from the station brings you to award winning Groombridge Place Gardens and the ‘Enchanted Forest’, designed to celebrate history, mystery and intrigue. The gardens feature a 17th Century manor house set in a moat dating back to 1230. Joint railway / admission tickets available. The start of the ‘Forest Way’ cycle trail is also close by. Sample Tunbridge Wells to Groombridge fares £8 adult, £4 child return.

Adjacent to the **High Rocks** Halt there are acres of sandstone outcrops to explore, linked by ornamental bridges. Discount admission is available for railway ticket holders. The station is next to the High Rocks Inn, Restaurant and Banqueting Complex. An ideal starting point for woodland walks, suggested itineraries are available.

At **Tunbridge Wells**, West station is the headquarters of the railway complete with Victorian engine shed where you can glimpse our collection of historic locomotives and carriages undergoing restoration. There is also a gift shop, buffet and model railway. The Pantiles, an historic colonnaded shopping area is a short walk away. During the summer you can take the waters from the ‘Chalybeate’ spring at the bath house.

Photography David Staines



Surrounded by the unspoilt beauty of the Kentish Weald, the Spa Valley Railway lies at the heart of one of England’s most beautiful regions. Take a trip by steam train for 5 miles from Eridge through the charming village of Groombridge to High Rocks and on to the town of Royal Tunbridge Wells, in an area rich in scenery and heritage. The railway frequently operates ‘Kate’, our award winning buffet and bar car, providing hot and cold drinks, snacks, cream teas and a licensed bar en-route. Make it a great day out by using the train to visit attractions along the line.

Special Events 2012

| | |
|--|---|
| Sat 31st March | Members / Volunteer recruitment day |
| Sun 8th & Mon 9th April | Easter Specials |
| Sat 14th & Sun 15th April | Spring Steam Gala |
| Sat 21st April | Diesel Running Day (No Steam) |
| Sun 22nd April | Network Rail Engineering Work |
| 12th, 13th, 19th & 20th May | Special service in operation - See <i>Website for details</i> |
| Sat 16th June | "A Day Out with Thomas" event |
| Fri 22nd to Sun 24th June | Meet Peppa Pig & George |
| Sat 30th June | Steaming through the 40's |
| Sat 7th July | Gilbert & Sullivan event |
| Sat 21st July | DEMU anniversary day |
| Fri 3rd to Sun 5th August | Meet Bob the Builder |
| Sat 18th & Sun 19th August | Summer Diesel Gala (No Steam this weekend) |
| Sat 8th September | Teddy's day out |
| Sat 15th & Sun 16th September | Meet Fireman Sam |
| 6th, 7th, 13th & 14th October | Swinging 60's weekend |
| Sat 20th October | "A Day Out with Thomas" event |
| Sat 20th & Sun 21st October | Diesel & Beer Day (No Steam) |
| Sat 27th & Sun 28th October | CAMRA Beer Festival |
| Thurs 1st & Fri 2nd November | Autumn Steam Gala |
| Friday 2nd November | Autumn Tints Specials |
| 1st, 2nd, 8th, 9th, 15th, 16th, 22nd & 23rd December | Halloween Murder Mystery evening |
| 29th December - 1st January | Santa Specials |
| | Kids for a Quid New Year special (accompanied Children £1) |

Members / Volunteers day – 31st March
Come and look behind the scenes and see how you could help run your local railway. Free travel for those joining on the day.

Steam Gala – 14th & 15th April
Our annual steam gala. All available locomotives in steam and perhaps a visiting engine.

Diesel days – 21st April & 20th October
Our fleet of heritage diesels take over for these events in the spring and autumn. No steam on these days.

Easter Specials – Sun 8th & Mon 9th April
On Sunday and Monday Easter bunny hunt, plus Easter eggs for visiting children.

Meet Peppa Pig & George – 16th June
Meet Bob the Builder – 21st July
Meet Fireman Sam – 8th September
A chance to meet the characters from the animated children's TV series.

Steaming through the 40s – Fri 22nd – Sun 24th June
One of the major events in the railway's calendar. Experience the 1940s on the railway. Army vehicles and personnel, 1940s cooking, dancing and a variety of linked attractions. For more details please check the website or contact the railway nearer the event.



Summer Diesel Gala – Fri 3rd – Sun 5th August
Our annual heritage diesel three day extravaganza with a special intensive service. No steam on these days.

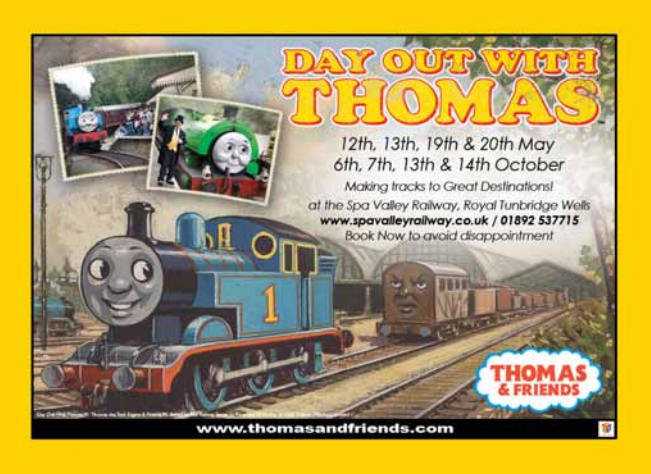
Teddy's day out – 18th & 19th August
Take teddy out for the day! All accompanied children who bring a teddy travel for £1 (and teddy goes free!)

CAMRA beer festival – Sat 20th & Sun 21st October
Plenty of real ale from breweries near and far.

Autumn Steam Gala – 27th & 28th October
A gala event celebrating country branch lines in the days of steam.

Details and a booking form for 'Day Out with Thomas and 'Santa Special' events will be available from the railway and on our website at least three months prior to the events. Advance booking is strongly recommended for these popular events to avoid disappointment.

For more details of all special events please visit www.spavalleyrailway.co.uk



GROOMBRIDGE PLACE GARDENS & ENCHANTED FOREST



Groombridge Place Gardens and the Enchanted Forest is a fabulous mix of quintessentially English formal gardens set alongside wild and whacky woodland play areas where children can let their imagination run riot. There is something to entertain all the family for many hours – and a visit to see Adam the zeedonk, who is half zebra and half donkey, is not to be missed.

The formal gardens were designed in the 17th century by the fashionable designer of the day, John Evelyn, and are still laid out in the same style today. Clever planting ensures year-round colour and scent, with the surrounding mellow walls providing shelter and warmth on breezy days.

Special joint tickets offering worthwhile savings are available for Groombridge Place Gardens & The Spa Valley Railway.

THE HIGH ROCKS

The magnificent High Rocks are steeped in history dating back millions of years. Acres of breathtaking sandstone rocks are interlined with eleven bridges. Visitors have been fascinated by the rocks for hundreds of years, providing a constant source of wonder. The rocks are located two minutes walk from the Spa Valley’s High Rocks Halt. Reduced admission is available on production of a valid Spa Valley Railway Ticket.