

Two cruises are available.  
The first is of one hour duration within the lower reaches of the river. The second is of three and a half hours and covers the entire River as far as Fatfield in Washington.



Photograph by George J. Taylor, Sunderland

Passengers taking the long cruise are able to disembark at the Washington Wildfowl & Wetlands Centre for about an hour before rejoining the ferry for the return journey to Sunderland. This inclusive ticket is available on most long cruises. Please check timetables for exact times.

Light refreshments are available on the longer cruise.

The main passenger compartment of the ferry is fully enclosed and heated and toilet facilities are available.

Supported by:  
The Borough of Sunderland,  
Tyne & Wear Development Corporation and  
The Sunderland Echo



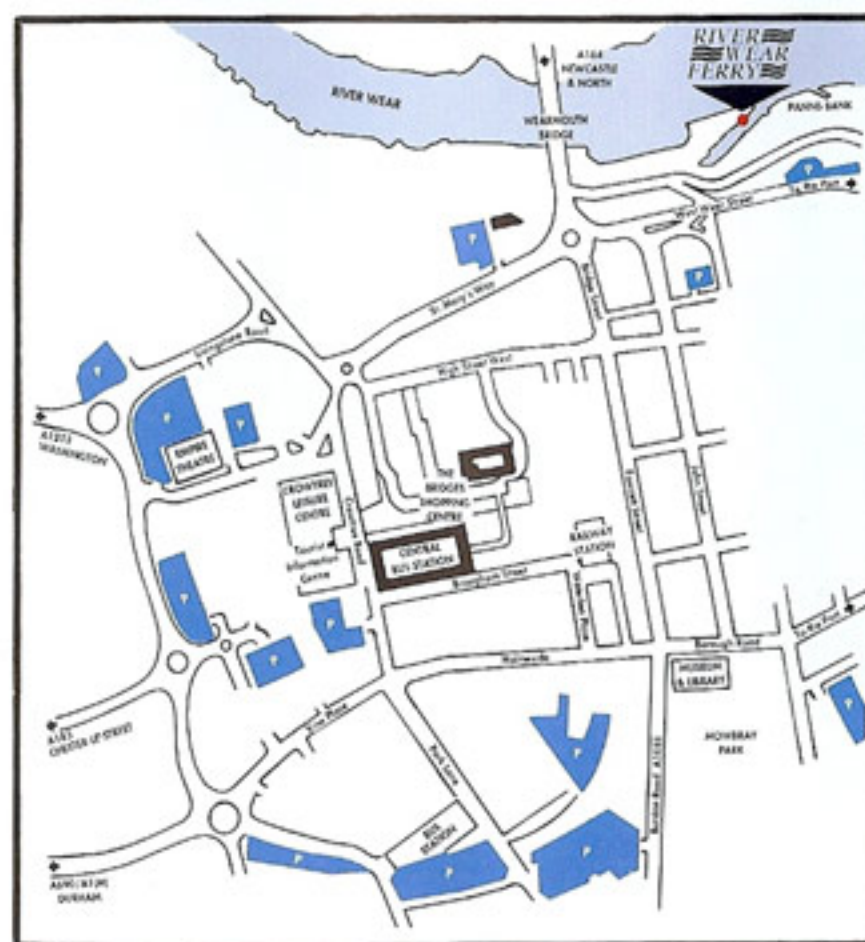
## Booking Information

All sailings depart from Panns Bank, Sunderland. Panns Bank is situated on the Seaward side of Wearmouth Bridge (opposite the Bonnersfield) and is accessible from High Street East or Wearmouth Bridge.

All sailing times are based on predicted tide depth. Any extreme variation in these predictions could cause a delay in the advertised departure and arrival times.

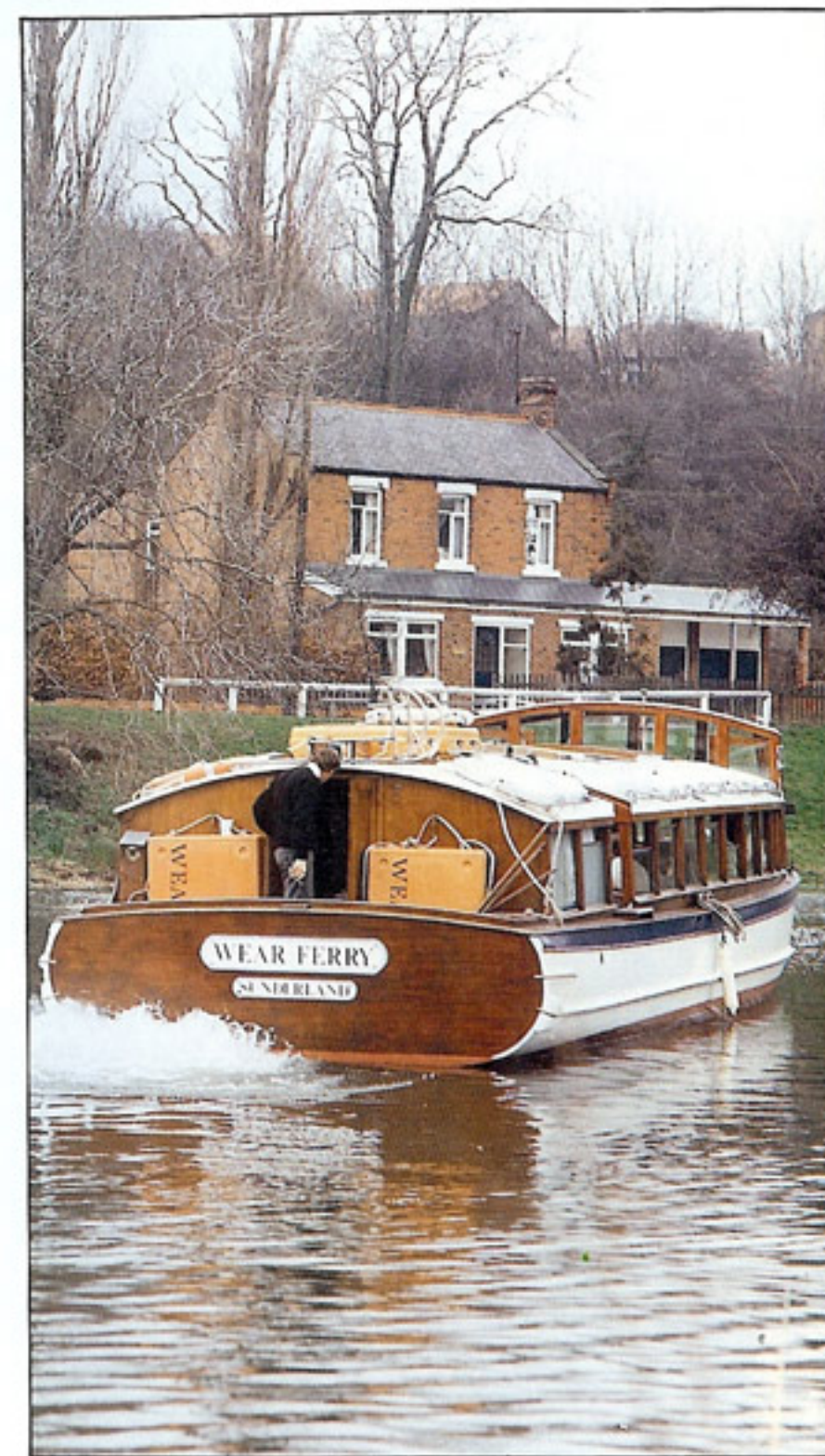
Passengers are requested to arrive 15 minutes before the advertised sailing times. Advance bookings are available on all cruises by contacting Sunderland Tourist Information Centre, Sunderland. Tel: (091) 565 0960 Please have a pen ready for your booking reference number.

If you wish to charter the ferry please contact the boat direct Tel: 0836 778702. This service is only available on the advertised sailing days shown in this brochure.



DESIGNED AND PRODUCED BY STEWART HINDMARSH ADVERTISING TEL (091) 564 0300

# RIVER WEAR FERRY



JUNE/JULY 1991



JUNE							
DATE	DEPART S'LAND	WILDFOWL & WETLANDS CENTRE				ARRIVE S'LAND	CRUISE TIME
		ARRIVE	DEPART	ARRIVE	DEPART		
Sat 1st	1530	-	-	-	-	1630	1
-	1730	-	-	-	-	2030	3
Sun 2nd	1000	-	-	-	-	1100	1
-	1600	-	-	-	-	1700	1
-	1800	-	-	-	-	2100	3*
Mon 3rd	0930	-	-	-	-	1030	1
-	1100	-	-	-	-	1200	1
-	1700	-	-	-	-	1800	1*
Tues 4th	0930	-	-	-	-	1030	1
-	1100	-	-	-	-	1200	1
Fri 7th	0945	1040	1050	1140	1150	1315	3.5
-	1400	-	-	-	-	1500	1
Sat 8th	1500	-	-	-	-	1600	1
Sun 9th	1000	-	-	-	-	1100	1
-	1130	1225	1235	1325	1335	1500	3.5*
Mon 10th	1100	-	-	-	-	1200	1
-	1230	1325	1335	1425	1435	1600	3.5
Tues 11th	1130	-	-	-	-	1230	1
-	1300	1355	1405	1455	1505	1630	3.5
Wed 12th	1230	-	-	-	-	1330	1
-	1400	1455	1505	1555	1605	1730	3.5
Thur 13th	1330	-	-	-	-	1430	1
-	1500	1555	1605	1655	1705	1830	3.5
Fri 14th	1430	-	-	-	-	1530	1
-	1600	-	-	-	-	1900	3
Sat 15th	1530	-	-	-	-	1630	1
-	1700	-	-	-	-	2000	3
Sun 16th	1000	-	-	-	-	1100	1
-	1600	-	-	-	-	1700	1
-	1800	-	-	-	-	2100	3*
Fri 21st	1000	1055	1105	1155	1205	1330	3.5
-	1430	-	-	-	-	1530	1
Sat 22nd	0930	-	-	-	-	1030	1
-	1100	1155	1205	1255	1305	1430	3.5
-	1530	-	-	-	-	1630	1
Sun 23rd	1030	-	-	-	-	1130	1
-	1630	-	-	-	-	1730	1
Mon 24th	1100	-	-	-	-	1200	1
-	1230	1325	1335	1425	1435	1600	3.5
Tues 25th	1200	-	-	-	-	1300	1
-	1330	1425	1435	1525	1535	1700	3.5
Wed 26th	1230	-	-	-	-	1330	1
-	1400	1455	1505	1555	1605	1730	3.5
Thur 27th	1300	-	-	-	-	1400	1
-	1430	1525	1535	1625	1635	1800	3.5
Fri 28th	1400	-	-	-	-	1500	1
-	1530	1625	1635	1725	1735	1900	3.5
Sat 29th	1430	-	-	-	-	1530	1
-	1630	-	-	-	-	1930	3
Sun 30th	1500	-	-	-	-	1600	1
-	1700	-	-	-	-	2000	3*

JULY							
DATE	DEPART S'LAND	WILDFOWL & WETLANDS CENTRE				ARRIVE S'LAND	CRUISE TIME
		ARRIVE	DEPART	ARRIVE	DEPART		
Sat 6th	1000	-	-	-	-	1100	1
-	1130	-	-	-	-	1230	1
-	1300	-	-	-	-	1400	1
-	1430	-	-	-	-	1530	1
Sun 7th	1000	1055	1105	1155	1205	1330	3.5
-	1400	-	-	-	-	1500	1
-	1530	-	-	-	-	1630	1
Mon 8th	0930	-	-	-	-	1030	1
-	1500	-	-	-	-	1600	1
-	1630	-	-	-	-	1730	1
Tues 9th	1030	-	-	-	-	1130	1
-	1600	-	-	-	-	1700	1
Wed 10th	1130	-	-	-	-	1230	1
-	1300	1355	1405	1455	1505	1630	3.5
Thur 11th	1230	-	-	-	-	1330	1
Fri 12th	1330	-	-	-	-	1430	1
-	1500	1555	1605	1655	1705	1830	3.5
Sat 13th	1400	-	-	-	-	1500	1
-	1530	1625	1635	1725	1735	1900	3.5
Sun 14th	1500	-	-	-	-	1600	1
-	1700	-	-	-	-	2000	3*
Mon 15th	0930	-	-	-	-	1030	1
-	1530	-	-	-	-	1630	1
-	1745	-	-	-	-	2045	3
Sat 20th	0930	1025	1035	1125	1135	1300	3.5
-	1400	-	-	-	-	1500	1
Sun 21st	1000	1055	1105	1155	1205	1330	3.5
-	1430	-	-	-	-	1530	1
-	1600	-	-	-	-	1700	1
Mon 22nd	1000	-	-	-	-	1100	1*
-	1130	1225	1235	1325	1335	1500	3.5
Tues 23rd	1100	-	-	-	-	1200	1*
-	1230	1325	1335	1425	1435	1600	3.5
Wed 24th	1200	-	-	-	-	1300	1*
-	1330	1425	1435	1525	1535	1700	3.5
Thur 25th	1230	-	-	-	-	1330	1*
-	1400	1455	1505	1555	1605	1730	3.5
Fri 26th	1300	-	-	-	-	1400	1*
-	1430	1525	1535	1625	1635	1800	3.5
Sat 27th	1330	-	-	-	-	1430	1*
-	1500	1555	1605	1655	1705	1830	3.5
Sun 28th	1400	-	-	-	-	1500	1
-	1530	1625	1635	1725	1735	1900	3.5*
Mon 29th	1430	-	-	-	-	1530	1
-	1630	-	-	-	-	1930	3

\* SPECIAL CRUISE WITH LIVE ENTERTAINMENT

## THE RIVER WEAR FERRY SUMMER ENTERTAINMENT SEASON

A season of folk music organised by Folkworks

**JUNE Sunday 2nd 1800 - 2100** Eddie Walker, a very entertaining solo singer and guitarist.

**Sunday 16th 1800 - 2100** Johnny Handle, one of the best known names in North East folk music - songs, monologues and piano accordion.

**Sunday 30th 1700 - 2000** Marie Little, a great solo singer and entertainer

**JULY Sunday 14th 1700 - 2000** Bob Fox and Benny Graham, North East song duo specialising in local songs.

**Sunday 28th 1530 - 1900** Johnny Handle.

\*\*\*\*\*

To start the school holidays, a whole week of ferry fun with Merlins close up magic on the following sailings:-

**JULY Monday 22nd 1000 - 1100**  
**Tuesday 23rd 1100 - 1200**  
**Wednesday 24th 1200 - 1300**  
**Thursday 25th 1230 - 1330**  
**Friday 26th 1300 - 1400**

Also Saturday 27th at 1330 - 1430 and every Saturday throughout the school holidays - Custard the Clown.

\*\*\*\*\*

Following a successful ferry season last year, we have Peter Peverley with his tribute to the Little Waster on the following sailings:-

**JULY Tuesday 23rd 1230 - 1600**  
**Wednesday 24th 1330 - 1700**  
**Thursday 25th 1400 - 1730**

\*\*\*\*\*

If you're interested in wildlife, this cruise is highly recommended:

**Sunday 9th June 1130 - 1500** Wear Waterside Wildlife with Alex Cole of Sunderland Museum and Dave Muir of the Durham Wildlife Trust.

More entertainment is planned for our August/September brochure available mid July.

PRICES	Adults	OAPs, Unwaged, Children (1-16 yrs)
1 hour cruise	£1.50	£0.75
3 hour cruise	£3.50	£2.00
Taster Ticket Wildfowl & Wetlands Centre	£4.50	£3.00

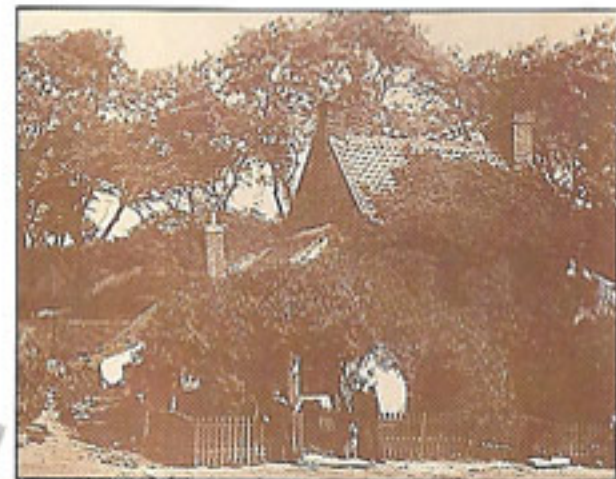


The River Wear Ferry provides an unique view of the river and its banks, echoing the pleasure trips first enjoyed by the Victorians on the passenger steamer, "The City of Norwich".

The great beauty and wonderful scenery of the River and its corridor are revealed in comfort from on board the ferry with an informative and entertaining commentary given by the crew and occasional guest speakers.

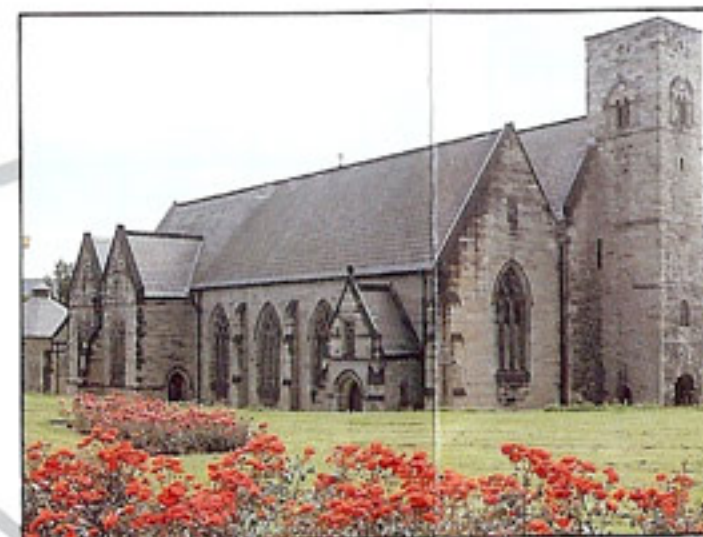
Alternatively, a number of cruises offer live entertainment of various kinds which have been very popular so please remember to book early.

Site of Girdle Cake Cottage - the cottage that stood on this site was given its name by local people who would row up the River on Sundays and stop for girdle or griddle scones and tea before returning on the Ebb tide.

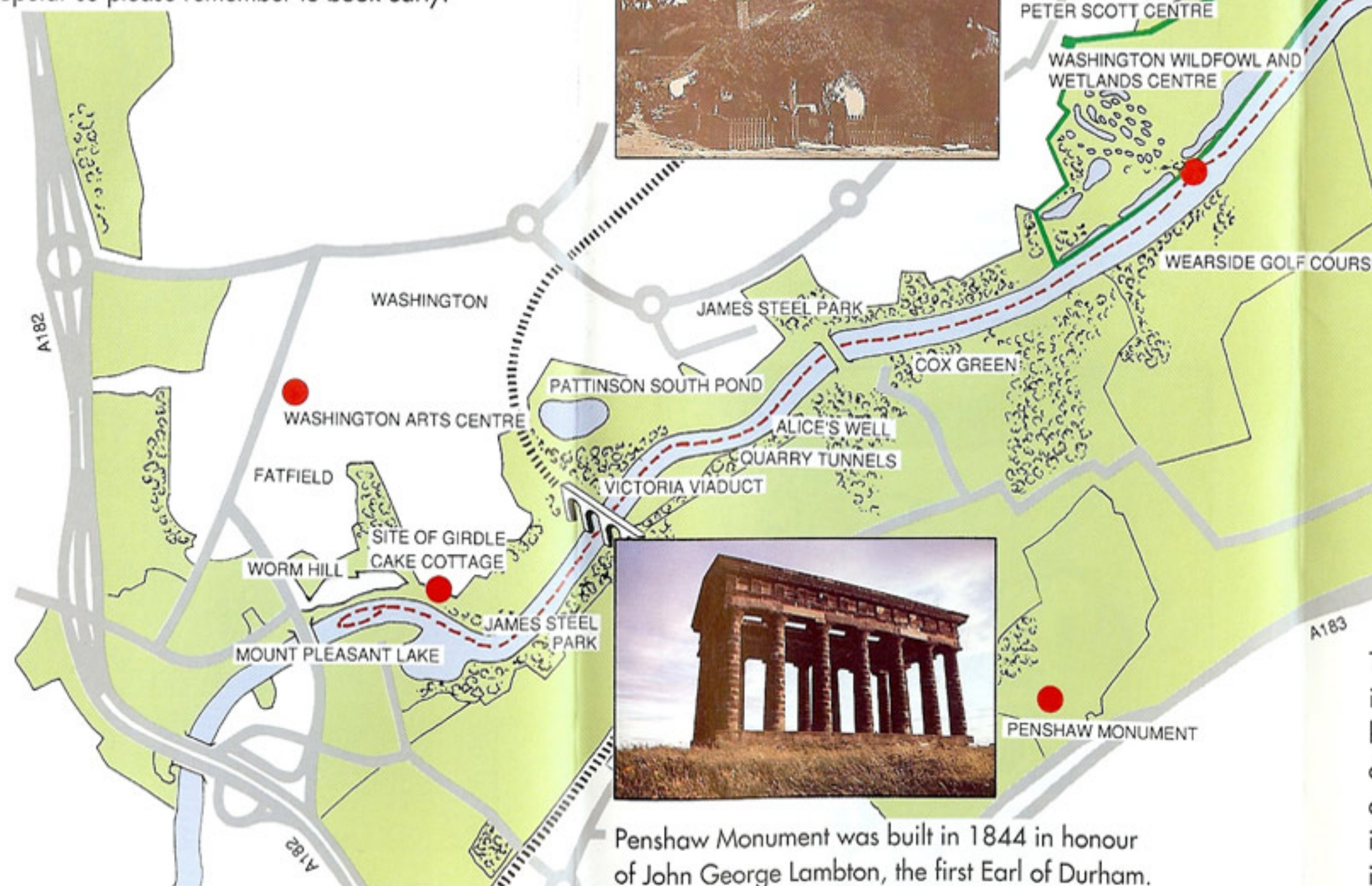


It is possible to combine a cruise on the River with a visit to Washington Wildfowl and Wetlands Centre. This service is available on most of the long sailings. Please consult the sailing times overleaf.

St Peter's Church is one of the most important sites in early Christian history in the country. A detailed contemporary account of its foundation in 674 AD still exists, written by the Venerable Bede, who lived and worked there.



One of the most popular parts of every cruise is a trip into the bay - weather permitting - with wonderful views of the seaside resorts and the town itself from an almost seaward vantage point.



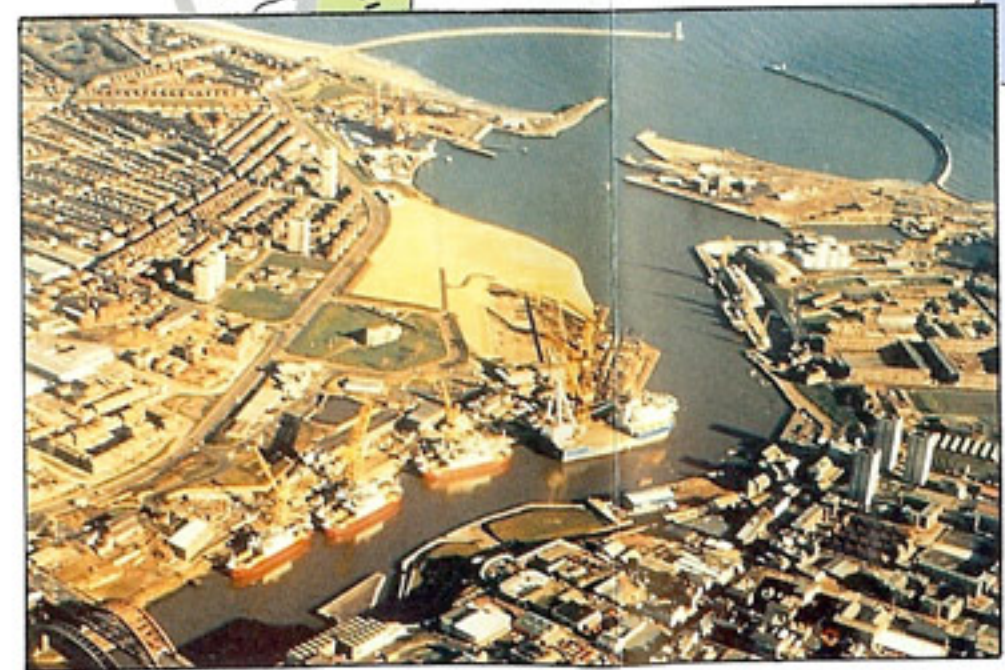
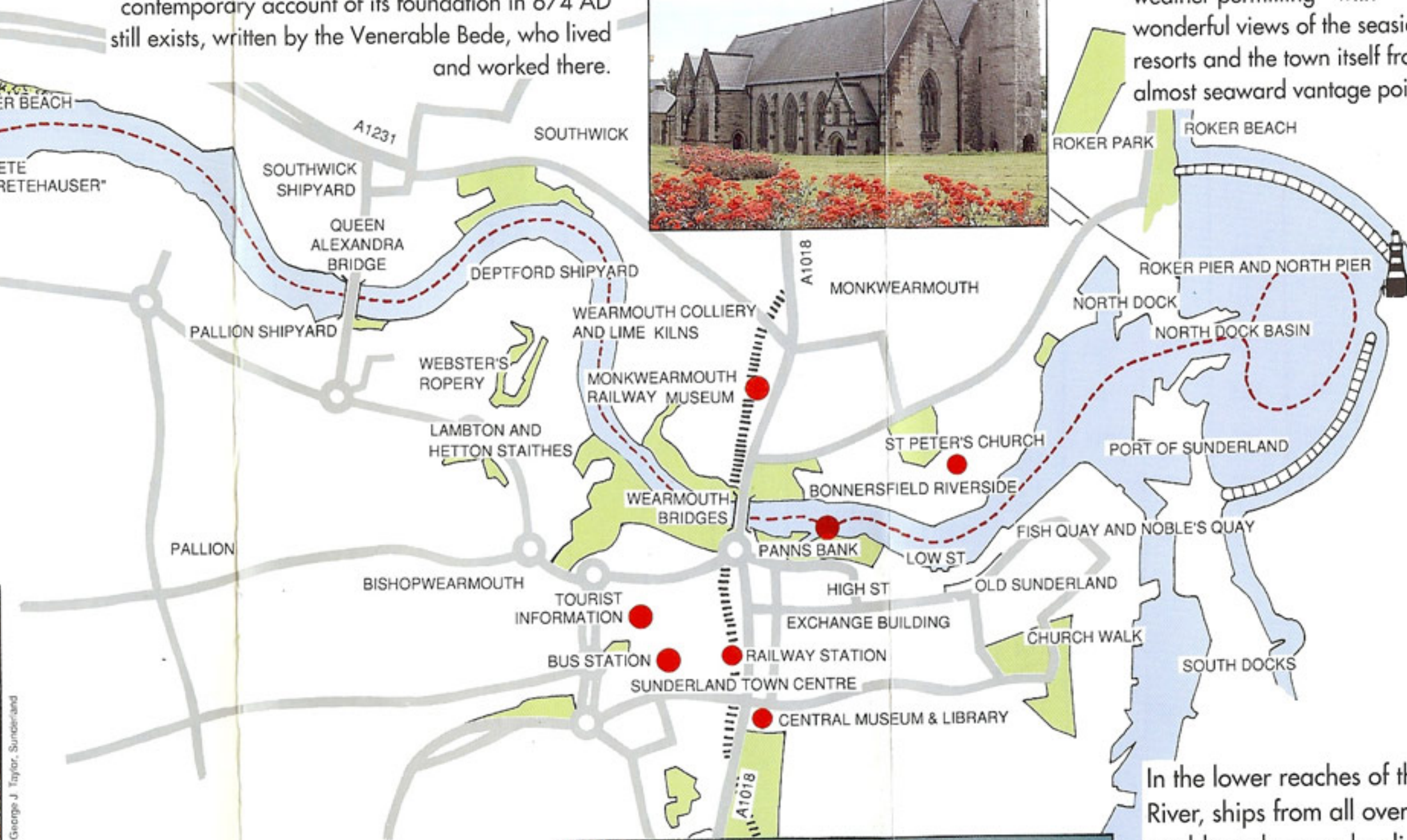
Penshaw Monument was built in 1844 in honour of John George Lambton, the first Earl of Durham. "Radical Jack" Lambton was involved in passing the great Reform Act of 1832.

The River Wear at Sunderland has something of interest for everyone - from a busy commercial harbour, quiet riverside pubs, a tremendous range of flora, fauna and wildlife, to historic buildings - around almost every bend of the River. The River itself offers a whole host of leisure pursuits which include fishing, competitive rowing, sailing, canoeing or for the less energetic, a peaceful stroll along its banks.



The River was once the main transport route serving local industries such as coal mining, shipbuilding and glass making. It transported raw materials and finished products to destinations in this country and abroad.

Evidence of many types of industries abound on both banks of the River, from early coal staithes to quarry tunnels still visible to this day.



In the lower reaches of the River, ships from all over the world can be seen loading and unloading their cargoes, a reminder of the important role that the River has played in the development of a busy commercial port, first founded by the River Wear Commissioners in 1717. This has helped to establish the River Wear at Sunderland prominently on the world map.

Just a few of the interesting landmarks seen on the journey are shown or indicated on this map.